

### LUMINAIRE SCHEDULE

- TYPE 'A': 2' x 4' RECESSED FLUORESCENT PARABOLIC TROFFER. THREE 32 WATT T8 LAMPS, 3500K WITH A MINIMUM CRI OF 75. ELECTRONIC BALLAST. DIE-FORMED STEEL HOUSING WITH 18 CELL, 3" DEEP ALUMINUM LOUVERS. PROVIDE SPECULAR SILVER FINISH. LITHONIA 2PM3332, METALUX, H.E. WILLIAMS, DAYBRITE, HUBBELL OR COLUMBIA.
- TYPE 'B': 2' x 2' RECESSED FLUORESCENT PARABOLIC TROFFER. THREE 31 WATT T8 BENT LAMPS, 3500K WITH A MINIMUM CRI OF 75. ELECTRONIC BALLAST. DIE-FORMED STEEL HOUSING WITH 9 CELL, 3" DEEP ALUMINUM LOUVERS. PROVIDE SPECULAR SILVER FINISH. LITHONIA 2PM3333J1, METALUX, H.E. WILLIAMS, DAYBRITE, HUBBELL OR COLUMBIA.
- TYPE 'B1': 2' x 2' RECESSED FLUORESCENT VANDAL RESISTANT TROFFER. THREE 31 WATT T8 BENT LAMPS, 3500K WITH A MINIMUM CRI OF 75. ELECTRONIC BALLAST. STEEL HOUSING AND DOOR FRAME SECURED BY FOUR TAMPER RESISTANT SCREWS. 25" CLEAR POLYCARBONATE LENS. LITHONIA 2VR1/3U31/WL, METALUX, H.E. WILLIAMS, DAYBRITE, HUBBELL OR COLUMBIA.
- TYPE 'C': 6" NOMINAL DIAMETER RECESSED FLUORESCENT DOWNLIGHT. TWO 13 WATT HORIZONTAL COMPACT FLUORESCENT LAMPS, 3500K WITH A MINIMUM CRI OF 82. ELECTRONIC BALLAST. DIE-CAST ALUMINUM HOUSING WITH SPECULAR CLEAR ALZAK REFLECTOR. LITHONIA AF2/13TT 6AR, HUBBELL, HALO, CAPRI, LIGHTOLIER OR APPROVED SUBSTITUTE.
- TYPE 'C1': 6" NOMINAL DIAMETER RECESSED FLUORESCENT DOWNLIGHT. TWO 13 WATT COMPACT FLUORESCENT LAMPS, 3500K WITH A MINIMUM CRI OF 82. DIE-CAST ALUMINUM HOUSING WITH FLAT FRESNEL LENS. CLEAR REFLECTOR. UL LISTED WET. LITHONIA LGF 2/13TT 6RW 173, HUBBELL, HALO, CAPRI, LIGHTOLIER OR APPROVED SUBSTITUTE.
- TYPE 'D': 4' SURFACE MOUNTED FLUORESCENT LUMINAIRE. TWO 32 WATT T8 LAMPS, 3500K WITH A MINIMUM CRI OF 75. ELECTRONIC BALLAST. DIE-FORMED STEEL HOUSING WITH WHITE FINISH. 100% WROGN ACRYLIC PRISMATIC DIFFUSER. PROVIDE DOWNLIGHTING COMPONENT ONLY. METALUX BE232, H.E. WILLIAMS, DAYBRITE, HUBBELL OR COLUMBIA.
- TYPE 'E': UNIVERSAL MOUNTED L.E.D. EXIT SIGN. DIE-CAST ALUMINUM CONSTRUCTION. GREEN LETTERS WITH DIFFUSE FACE AND BRUSHED ALUMINUM HOUSING. PROVIDE 90-MINUTE NICKEL CADMIUM BATTERY BACKUP. LITHONIA LES, ISOLITE, CHLORIDE OR APPROVED SUBSTITUTE.
- TYPE 'F': 4' SURFACE MOUNTED FLUORESCENT STAGGERED STRIPLIGHT. TWO 32 WATT T8 LAMPS, 3500K WITH A MINIMUM CRI OF 75. ELECTRONIC BALLAST. DIE-FORMED STEEL CHANNEL. WHITE FINISH. LITHONIA SS232, METALUX, H.E. WILLIAMS, DAYBRITE, HUBBELL OR COLUMBIA.
- TYPE 'F1': 4' SURFACE MOUNTED FLUORESCENT STRIPLIGHT. TWO 32 WATT T8 LAMPS, 3500K WITH A MINIMUM CRI OF 75. ELECTRONIC BALLAST. DIE-FORMED STEEL CHANNEL. WHITE FINISH. LITHONIA C232, METALUX, H.E. WILLIAMS, DAYBRITE, HUBBELL OR COLUMBIA.
- TYPE 'F2': SAME AS TYPE 'F1' EXCEPT WITH ASYMMETRICAL REFLECTOR.
- TYPE 'G': 38" DIAMETER BY 8" DEEP PENDANT MOUNTED FLUORESCENT LUMINAIRE. NINE 39 WATT COMPACT FLUORESCENT LAMPS, 3500K WITH A MINIMUM CRI OF 82. ELECTRONIC BALLASTS. WHITE OPAL BOWL WITH BRUSHED ALUMINUM FINISH. PENDANT MOUNT 48" FROM CEILING. GROSS CHANDELER COMPANY G12800-38-PL-W-BA OR APPROVED SUBSTITUTE.
- TYPE 'H': SURFACE MOUNTED INCANDESCENT SCONCE. ONE 150 WATT QUARTZ LAMP. 5" HIGH BY 24" WIDE BY 8.5" DEEP FROSTED GLASS SHADE HOUSING. ASW FINISH AS SELECTED BY ARCHITECT. MOUNT AT +8'-0". RON REZEK 472 OR APPROVED SUBSTITUTE.
- TYPE 'I': NOT USED
- TYPE 'J': 4' SURFACE MOUNTED FLUORESCENT WRAPAROUND. TWO 32 WATT T8 LAMPS, 3500K WITH A MINIMUM CRI OF 75. ELECTRONIC BALLAST. DIE-FORMED STEEL HOUSING WITH 100% ACRYLIC DIFFUSER. LITHONIA SB232, METALUX, H.E. WILLIAMS, DAYBRITE, HUBBELL OR COLUMBIA.
- TYPE 'J1': SAME AS TYPE 'J' EXCEPT CHAIN HUNG AT +10'-0" A.F.F.
- TYPE 'K': 7.5" NOMINAL DIAMETER RECESSED H.I.D. DOWNLIGHT. ONE 150 WATT HQI METAL HALIDE LAMP, 3000K WITH A MINIMUM CRI OF 70. HIGH POWER FACTOR BALLAST. ALUMINUM HOUSING WITH SPECULAR ALUMINUM UPPER REFLECTOR AND LOW BRIGHTNESS SPECULAR ALUMINUM LOWER REFLECTOR. PROVIDE UV ABSORBING TEMPERED PRISMATIC GLASS LENS MOUNTED TO UPPER REFLECTOR. KIRLIN RR50713, STAFF, INDY OR APPROVED SUBSTITUTE.
- TYPE 'K1': SAME AS TYPE 'K' EXCEPT WITH ONE 70 WATT HQI METAL HALIDE LAMP. KIRLIN RR50713-43, STAFF, INDY OR APPROVED SUBSTITUTE.
- TYPE 'L': 3-1/2" NOMINAL DIAMETER RECESSED INCANDESCENT DOWNLIGHT. ONE 50 WATT PAR20 FLOOD LAMP. DIE-FORMED ALUMINUM HOUSING WITH CLEAR REFLECTOR. CAPRI R4X-R402, HALO, LIGHTOLIER OR APPROVED SUBSTITUTE.
- TYPE 'M': 3-7/16" NOMINAL DIAMETER RECESSED LOW-VOLTAGE DOWNLIGHT. ONE 20 WATT MR-16 LAMP. 5-1/2" DEEP STEEL HOUSING WITH BLACK ALZAK REFLECTOR. PROVIDE INTEGRAL TRANSFORMER. CAPRI LV1EX, HALO, LIGHTOLIER OR APPROVED SUBSTITUTE.
- TYPE 'N': ADDITIVE ALTERNATE SURFACE MOUNTED H.I.D. LUMINAIRE. ONE 250 WATT METAL HALIDE LAMP, 3900K WITH A MINIMUM CRI OF 70. STEEL HOUSING WITH SPECULAR ALUMINUM REFLECTOR. PROVIDE HIGH POWER FACTOR REMOTE BALLAST.
- TYPE 'S': EXTERIOR 8" NOMINAL DIAMETER RECESSED FLUORESCENT DOWNLIGHT. TWO 13 WATT HORIZONTAL COMPACT FLUORESCENT LAMPS, 3500K WITH A MINIMUM CRI OF 82. COLD WEATHER BALLASTS. DIE-CAST ALUMINUM HOUSING WITH CLEAR REFLECTOR. UL LISTED DAMP. LITHONIA AF2/13TT 6AR, HALO, HUBBELL, CAPRI, LIGHTOLIER OR APPROVED SUBSTITUTE.
- TYPE 'SA': EXTERIOR AREA MOUNTED H.I.D. SITE LUMINAIRE. ONE 250 WATT HIGH PRESSURE SODIUM LAMP. 20 DEGREE HIGH POWER FACTOR BALLAST. DIE-CAST ALUMINUM HOUSING. IMPACT RESISTANT TEMPERED GLASS LENS. FULLY GASKETED WITH ONE - PIECE TUBULAR SILICONE EXTRUDED ALUMINUM 4" ARM. TYPE IV DISTRIBUTION FINISH AS LITHONIA KAD2505 OR APPROVED SUBSTITUTE.
- TYPE 'SB': SAME AS TYPE 'SA' EXCEPT WITH TWO HEADS PER POLE.
- TYPE 'SD': EXTERIOR FLOOD LIGHT. HID SITE LUMINAIRE. 75 WATTS ALZAK REFLECTOR. NARROW FLOOD BEAM. HIGH SHIELD. KIM LIGHTING NO. ED-17 COPRI, LITHONIA OR APPROVED SUBSTITUTE.
- TYPE 'SE': EXTERIOR WALL MOUNTED LUMINAIRE. 2 LAMP 9W FL. WHITE OPAL GLASS WITH WEATHERED BRASS FINISH. NPF BALLAST. DEBRO TYPE 6111, LITHONIA COPRI, OR APPROVED SUBSTITUTE.

### MECHANICAL EQUIPMENT CONNECTION SCHEDULE

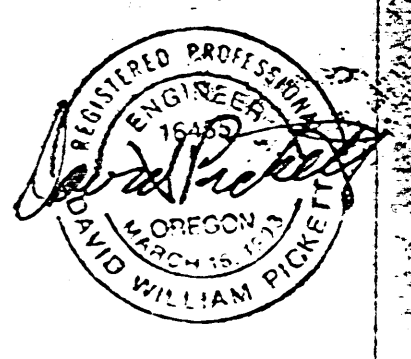
SYMBOL	DESCRIPTION	VOLTAGE	PHASE	LOAD	FEEDER	BREAKER	CIRCUIT	NOTES
AC-1	ROOFTOP A/C UNIT	480	3	164.8 MVA	SEE ONE-LINE DIAGRAM		MOP	MECHANICAL PACKAGE UNIT
AC-2	ROOFTOP A/C UNIT	480	3	113.5 MVA	4#12, 1#12 GND, 1-1/2" C.	125A	MOP	MECHANICAL SUPPLIED PACKAGE UNIT
B-1	HEATING WATER BOILER	120	1	1/3	2#12, 1#12 GND, 1/2" C.	20A	R1-1.	MECHANICAL SUPPLIED PACKAGE UNIT
B-2	HEATING WATER BOILER	120	1	1/3	2#12, 1#12 GND, 1/2" C.	20A	R1-3.	MECHANICAL SUPPLIED PACKAGE UNIT
EF-1	ROOFTOP EXHAUST FAN	120	1	1/4	2#12, 1#12 GND, 1/2" C.	20A	R2-1.	
EF-2	ROOFTOP EXHAUST FAN	120	1	1/4	2#12, 1#12 GND, 1/2" C.	20A	R2-3.	
EF-3	ROOFTOP EXHAUST FAN	120	1	1/4	2#12, 1#12 GND, 1/2" C.	20A	R2-5.	
EF-4	ROOFTOP EXHAUST FAN	120	1	1/4	2#12, 1#12 GND, 1/2" C.	20A	R2-2.	
EF-5	ROOFTOP EXHAUST FAN	120	1	1/60	2#12, 1#12 GND, 1/2" C.	20A	R2-11.	
EF-6	ROOFTOP EXHAUST FAN	120	1	1/4	2#12, 1#12 GND, 1/2" C.	20A	R2-4.	MECHANICAL SUPPLIED PACKAGE UNIT
P-1	IN-LINE MOUNTED PUMP	480	3	1-1/2 HP	4#12, 1#12 GND, 1/2" C.	20A	M1-1.3.5.	MECHANICAL SUPPLIED PACKAGE UNIT
P-2	IN-LINE MOUNTED PUMP	480	3	1-1/2 HP	4#12, 1#12 GND, 1/2" C.	20A	P1-1.3.5.	MECHANICAL SUPPLIED PACKAGE UNIT
P-3	IN-LINE MOUNTED PUMP	480	3	3/4 HP	4#12, 1#12 GND, 1/2" C.	20A	M1-1.3.5.	MECHANICAL SUPPLIED PACKAGE UNIT
P-4	IN-LINE MOUNTED PUMP	480	3	3/4 HP	4#12, 1#12 GND, 1/2" C.	20A	M1-1.3.5.	MECHANICAL SUPPLIED PACKAGE UNIT
P-5	CIRCULATION PUMP	120	1	1/6 HP	2#12, 1#12 GND, 1/2" C.	20A	R2-6.	CEILING SPACE UNDER AC-1
P-6	CIRCULATION PUMP	120	1	1/6 HP	2#12, 1#12 GND, 1/2" C.	20A	R2-7.	CEILING SPACE UNDER AC-2
RCP-1	RECIRC. PUMP	120	1	1/12 HP	2#12, 1#12 GND, 1/2" C.	20A	R1-6.	
EW-1	ELECTRIC WATER COOLER	120	1	1/5 HP	2#12, 1#12 GND, 1/2" C.	20A	R1-5.	MECHANICAL SUPPLIED PACKAGE UNIT LOCATED ON FIRST FLOOR
EW-2	ELECTRIC WATER COOLER	120	1	1/5 HP	2#12, 1#12 GND, 1/2" C.	20A	R2-9.	MECHANICAL SUPPLIED PACKAGE UNIT LOCATED ON SECOND FLOOR
EF-1	EXHAUST FAN	120	1	75KW	2#12, 1#12 GND, 1/2" C.	20A	R1-6.	MECHANICAL SUPPLIED PACKAGE UNIT
WH-1	WATER HEATER	120	1	1A	2#12, 1#12 GND, 1/2" C.	20A	R. 1-6.	MECHANICAL SUPPLIED PACKAGE UNIT
UH-1	UNIT HEATER	208	1	1/20 HP 3KW	2#12, 1#12 GND, 1/2" C.	20A	M1-13.15.17.	
VAV	VARIABLE AIR VOLUME UNITS	120	1	100W EACH	2#12, 1#12 GND, 1/2" C.	20A	VARIABLES	SEE DRAWINGS FOR LOCATIONS
FP VAV	VARIABLE AIR VOLUME UNITS	277	1	.75KW EACH	2#12, 1#12 GND, 1/2" C.	20A	VARIABLES	SEE DRAWINGS FOR LOCATIONS

GENERAL NOTES:

- REFER TO MECHANICAL PLANS FOR EXACT LOCATIONS OF MECHANICAL EQUIPMENT.
- PROVIDE WIRE, CONDUIT AND CONNECTIONS FOR FIRE/SMOKE DAMPERS. REFER TO PANEL SCHEDULES FOR CIRCUITING AND DRAWING FOR LOCATIONS.

### ELECTRICAL SYMBOL LEGEND

- ⊙ EXTERIOR FLOOD LIGHTS
- ⊕ POLE MOUNTED LUMINAIRE
- ⊖ SURFACE MOUNTED ADJUSTABLE LUMINAIRE
- ⊖ SURFACE MOUNTED LUMINAIRE
- N.L. LUMINAIRE WITH ONE LAMP ON NIGHT LIGHTING
- ⊖ OCCUPANCY SENSOR
- ⊖ RECESSED LUMINAIRE
- ⊖ 2' x 2' RECESSED FLUORESCENT LUMINAIRE
- ⊖ 2' x 4' RECESSED FLUORESCENT LUMINAIRE
- ⊖ SURFACE MOUNTED LUMINAIRE
- ⊖ 6" x 4' SURFACE MOUNTED FLUORESCENT LUMINAIRE
- ⊖ WALL MOUNTED LUMINAIRE
- ⊖ 1' x 4' RECESSED FLUORESCENT LUMINAIRE
- ⊖ 6" x 4' WALL MOUNTED FLUORESCENT LUMINAIRE
- ⊖ SURFACE MOUNTED STRIPLIGHT
- ⊖ EXIT LIGHT, CEILING MOUNTED
- ⊖ EXIT LIGHT, CEILING MOUNTED, ARROW INDICATING DIRECTION
- ⊖ EXIT LIGHT, WALL MOUNTED
- ⊖ SINGLE SWITCH
- ⊖ DOUBLE POLE SWITCH
- ⊖ SWITCH WITH PILOT LIGHT
- ⊖ KEYED SWITCH
- ⊖ MANUAL MOTOR STARTER WITH THERMAL OVERLOAD
- ⊖ NON-FUSED DISCONNECT SWITCH
- ⊖ FUSED DISCONNECT SWITCH
- ⊖ DEDICATED RECEPTACLE
- ⊖ DUPLEX RECEPTACLE
- ⊖ DOUBLE DUPLEX RECEPTACLE
- ⊖ DUPLEX RECEPTACLE GROUND FAULT INTERRUPTER
- ⊖ SPECIAL PURPOSE RECEPTACLE
- ⊖ DUPLEX RECEPTACLE FLOOR BOX
- ⊖ DUPLEX RECEPTACLE WITH DATA AND PHONE OUTLET FLOOR BOX
- ⊖ SURFACE MOUNT BRANCH CIRCUIT BOARD
- ⊖ FLUSH MOUNT BRANCH CIRCUIT BOARD
- ⊖ MAIN DISTRIBUTION PANEL BOARD.
- ⊖ CONTINUATION
- ⊖ TELEPHONE OUTLET WITH 3/4" C. STUBBED INTO ACCESSIBLE CEILING SPACE
- ⊖ TELE/DATA OUTLET
- ⊖ DATA OUTLET
- ⊖ TELEPHONE OUTLET FOR PUBLIC TELEPHONE
- ⊖ JUNCTION BOX
- ⊖ MOTOR CONNECTION
- ⊖ ELECTRONIC DOOR LOCKS
- ⊖ PHOTO-ELECTRIC SWITCH
- ⊖ PANIC ALARM BUTTON
- ⊖ CONDUIT STUBBED OUT
- ⊖ TELEPHONE TERMINAL BOARD
- ⊖ DOOR ALARM BY-PASS KEYPAD
- ⊖ TELEVISION CABLE OUTLET
- ⊖ CAMERA
- ⊖ FIRE PULL STATION
- ⊖ SMOKE DETECTOR
- ⊖ FLOW SWITCH
- ⊖ TAMPER SWITCH
- ⊖ FIRE BELL/HORN COMBINATION
- ⊖ FIRE SMOKE DAMPER



W. B. WICK & ASSOCIATES, INC.  
 REGISTERED PROFESSIONAL ENGINEERS  
 LICENSE NO. 1212  
 STATE OF OREGON  
 MECHANICAL ENGINEERING  
 1212 SW SALMON STREET SUITE 100 PORTLAND, OREGON 97205  
 (503) 297-7877

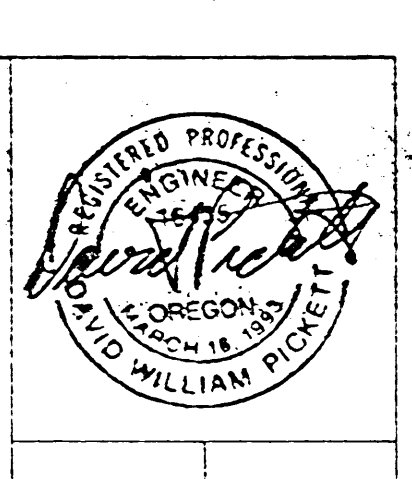
ALBANY CITY HALL  
 ALBANY, OREGON  
 Broadalbin Street  
 Mechanical / Electrical Consultant: W. B. Wick & Associates, Inc.  
 Landscape Consultant: Interface Engineering, Inc.  
 Registered Associates

LUMINAIRE SCHEDULE, SYMBOL LEGEND

REVISIONS  
 DATE: 1/18/95  
 JOB NO.: 93-25-500  
 DRAWN: CAM  
 CHECK: DSC

PROJECT NO.: 93-311  
 INTERFACE ENGINEERING, INC.  
 Consulting Engineers  
 800-854-2224 DEBORAH CONWAY

E0.1



STARK B A R C H I T E C T S  
170 SW SALMON STREET SUITE 100 PORTLAND, OREGON 97205  
(503) 227-2070

**ALBANY CITY HALL**  
BROADALBIN STREET  
ALBANY, OREGON

**LUMINAIRE SCHEDULE, SYMBOL LEGEND**

REVISIONS  
DATE 7/25/2017  
JOB NO. 93-311  
DWG. CAM  
DSC

PROJECT NO: 93-311  
INTERFACE ENGINEERING INC.  
CONSULTING ENGINEERS  
508 SW 6TH AVENUE PORTLAND, OREGON 97204  
PROJECT ENGINEER: CHUCK DSC

Panel Schedule 1100 PNL L1  
3 Phase 4 Wire Voltage LL: 480 Voltage LG: 277

DC Device/Breaker	Device Family	Mounting SURFACE	Enclosure: NEMA 1	Available Fault Duty:	A 3 Phase
1 L- WEST OFFICES		2324			2
2 L- WEST OFFICES		4183			4
3 L- WEST OFFICES		2096			8
4 CORRIDOR		4183			12
5 L- MAIN CONF		3801			10
6 L- SPARE OFFICES		2799			14
7 SPARE					16
8 SPARE					18
9 SPARE					20
10 SPARE					22
11 SPARE					24
12 SPARE					26
13 SPARE					28
14 SPARE					30
15 SPARE					32
16 SPARE					34
17 SPARE					36
18 SPARE					38
19 SPARE					40
20 SPARE					42
21 SPARE					
22 SPARE					
23 SPARE					
24 SPARE					
25 SPARE					
26 SPARE					
27 SPARE					
28 SPARE					
29 SPARE					
30 SPARE					
31 SPARE					
32 SPARE					
33 SPARE					
34 SPARE					
35 SPARE					
36 SPARE					
37 SPARE					
38 SPARE					
39 SPARE					
40 SPARE					
41 SPARE					
42 SITE LIGHTING					

Panel Schedule 1110 PNL L2  
3 Phase 4 Wire Voltage LL: 480 Voltage LG: 277

DC Device/Breaker	Device Family	Mounting SURFACE	Enclosure: NEMA 1	Available Fault Duty:	A 3 Phase
1 L- V OPEN OFFICE		1890			2
2 L- V OPEN OFFICE		1530			4
3 L- V OPEN OFFICE		1530			6
4 L- N OPEN OFFICE		710			8
5 L- N OPEN OFFICE		1680			10
6 L- NE OFFICE		1890			12
7 L- SE OPEN OFFICE		1810			14
8 L- SE OPEN OFFICE		810			16
9 L- SE OPEN OFFICE		1500			18
10 L- LANDSCAPE		1500			20
11 SPARE					22
12 SPARE					24
13 SPARE					26
14 SPARE					28
15 SPARE					30
16 SPARE					32
17 SPARE					34
18 SPARE					36
19 SPARE					38
20 SPARE					40
21 SPARE					42

Panel Schedule 1200 PNL M1  
3 Phase 4 Wire Voltage LL: 480 Voltage LG: 277

DC Device/Breaker	Device Family	Mounting SURFACE	Enclosure: NEMA 1	Available Fault Duty:	A 3 Phase
1 P-1,2,3,4		2010			2
2 P-1,2,3,4		2010			4
3 P-1,2,3,4		2010			6
4 P-1,2,3,4		2010			8
5 P-1,2,3,4		2010			10
6 P-1,2,3,4		2010			12
7 P-1,2,3,4		2010			14
8 P-1,2,3,4		2010			16
9 P-1,2,3,4		2010			18
10 P-1,2,3,4		2010			20
11 P-1,2,3,4		2010			22
12 P-1,2,3,4		2010			24
13 P-1,2,3,4		2010			26
14 P-1,2,3,4		2010			28
15 P-1,2,3,4		2010			30
16 P-1,2,3,4		2010			32
17 P-1,2,3,4		2010			34
18 P-1,2,3,4		2010			36
19 P-1,2,3,4		2010			38
20 P-1,2,3,4		2010			40
21 P-1,2,3,4		2010			42

Panel Schedule 1700 PNL EM  
3 Phase 4 Wire Voltage LL: 480 Voltage LG: 277

DC Device/Breaker	Device Family	Mounting SURFACE	Enclosure: NEMA 1	Available Fault Duty:	A 3 Phase
1 L- 1ST FLOOR N.L.		2296			2
2 L- 2ND FLOOR N.L.		2500			4
3 F-3		500			6
4 SECURITY SYSTEM		500			8
5 SPARE					10
6 SPARE					12

Panel Schedule 1310 PNL R1  
3 Phase 4 Wire Voltage LL: 208 Voltage LG: 120

DC Device/Breaker	Device Family	Mounting SURFACE	Enclosure: NEMA 1	Available Fault Duty:	A 3 Phase
1 B-1		864			2
2 B-2		600			4
3 B-3		200			6
4 B-4		400			8
5 B-5		100			10
6 B-6		200			12
7 B-7		1500			14
8 B-8		1500			16
9 B-9		1500			18
10 B-10		1500			20
11 B-11		1500			22
12 B-12		1500			24
13 B-13		1500			26
14 B-14		1500			28
15 B-15		1500			30
16 B-16		1500			32
17 B-17		1500			34
18 B-18		1500			36
19 B-19		1500			38
20 B-20		1500			40
21 B-21		1500			42

Panel Schedule 1311 PNL R.1  
3 Phase 4 Wire Voltage LL: 208 Voltage LG: 120

DC Device/Breaker	Device Family	Mounting SURFACE	Enclosure: NEMA 1	Available Fault Duty:	A 3 Phase
1 R-OFFICES		1000			2
2 R-OFFICES		800			4
3 R-OFFICES		1200			6
4 R-COMPUTERS		1500			8
5 R-FILE SERVER		1500			10
6 R-FILE SERVER		1500			12
7 R-FILE SERVER		1500			14
8 R-FILE SERVER		1500			16
9 R-FILE SERVER		1500			18
10 R-PARTITIONS		1500			20
11 R-PARTITIONS		1500			22
12 R-PARTITIONS		1500			24
13 R-PARTITIONS		1500			26
14 R-PARTITIONS		1500			28
15 R-PARTITIONS		1500			30
16 R-PARTITIONS		1500			32
17 R-PARTITIONS		1500			34
18 R-PARTITIONS		1500			36
19 R-PARTITIONS		1500			38
20 R-PARTITIONS		1500			40
21 R-PARTITIONS		1500			42

Panel Schedule 1320 PNL R2  
3 Phase 4 Wire Voltage LL: 208 Voltage LG: 120

DC Device/Breaker	Device Family	Mounting SURFACE	Enclosure: NEMA 1	Available Fault Duty:	A 3 Phase
1 EF-1		700			2
2 EF-2		700			4
3 EF-3		700			6
4 EF-4		700			8
5 EF-5		700			10
6 EF-6		700			12
7 EF-7		700			14
8 EF-8		700			16
9 EF-9		700			18
10 EF-10		700			20
11 EF-11		700			22
12 EF-12		700			24
13 EF-13		700			26
14 EF-14		700			28
15 EF-15		700			30
16 EF-16		700			32
17 EF-17		700			34
18 EF-18		700			36
19 EF-19		700			38
20 EF-20		700			40
21 EF-21		700			42

Panel Schedule 1325 PNL R2.1  
3 Phase 4 Wire Voltage LL: 208 Voltage LG: 120

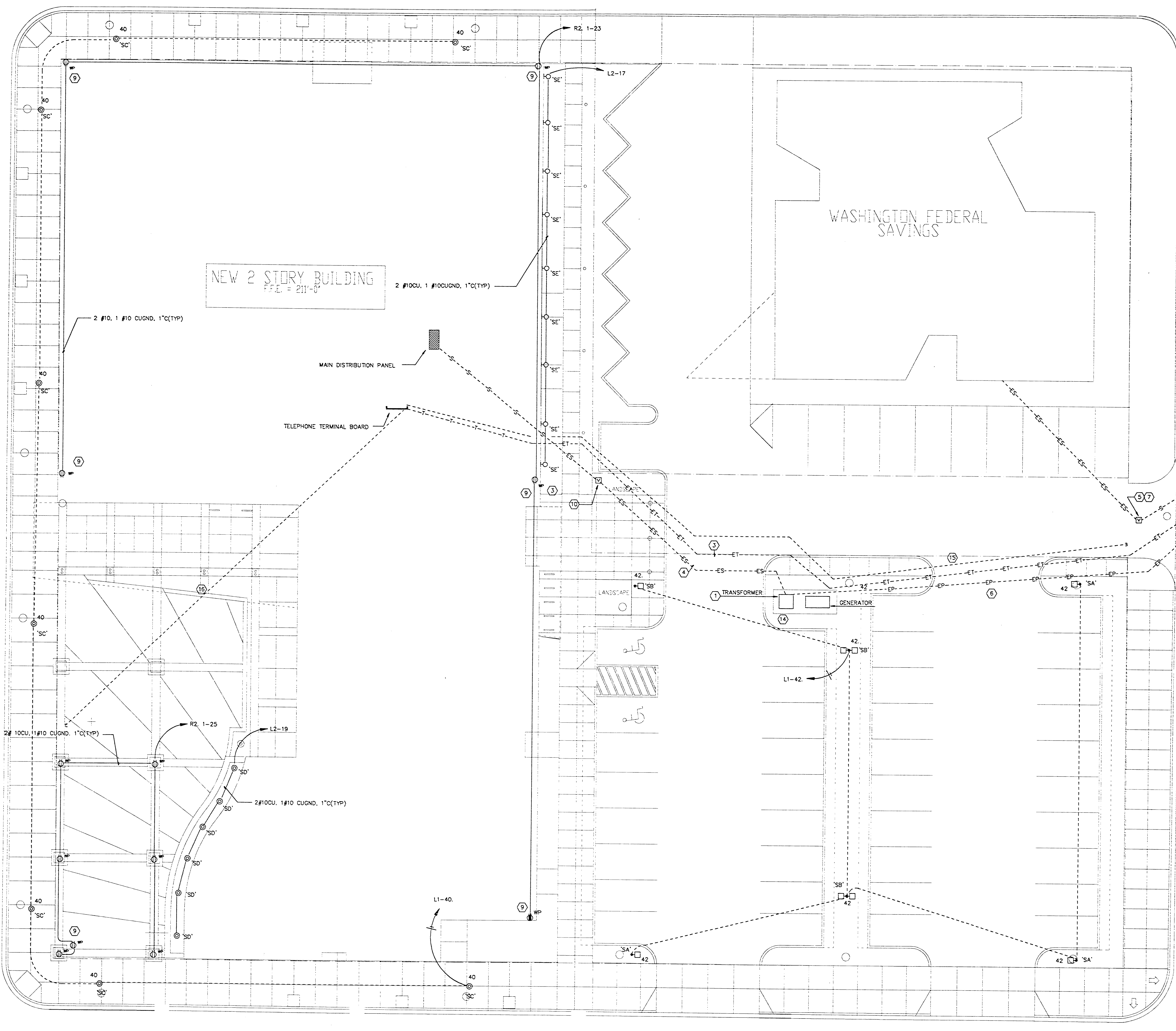
DC Device/Breaker	Device Family	Mounting SURFACE	Enclosure: NEMA 1	Available Fault Duty:	A 3 Phase
1 R-OFFICE		1000			2
2 R-OFFICE		800			4
3 R-OFFICE		1400			6
4 R-TECH.		1500			8
5 R-TECH.		1500			10
6 R-TECH.		1500			12
7 R-TECH.		1500			14
8 R-TECH.		1500			16
9 R-TECH.		1500			18
10 R-TECH.		1500			20
11 R-TECH.		1500			22
12 R-TECH.		1500			24
13 R-TECH.		1500			26
14 R-TECH.		1500			28
15 R-TECH.		1500			30
16 R-TECH.		1500			32
17 R-TECH.		1500			34
18 R-TECH.		1500			36
19 R-TECH.		1500			38
20 R-TECH.		1500			40
21 R-TECH.		1500			42

Panel Schedule 1410 PNL C1  
3 Phase 4 Wire Voltage LL: 208 Voltage LG: 120

DC Device/Breaker	Device Family	Mounting SURFACE	Enclosure: NEMA 1	Available Fault Duty:	A 3 Phase
1 R-OFFICE		800			2
2 R-OFFICE		1000			4
3 R-OFFICE		600			6
4 R-OFFICE		600			8
5 R-OFFICE		600			10
6 R-OFFICE		600			12
7 R-OFFICE		600			14
8 R-OFFICE		600			16
9 R-OFFICE		600			18
10 R-OFFICE		600			20
11 R-OFFICE		600			22
12 R-OFFICE		600			24
13 R-OFFICE		600			26
14 R-OFFICE		600			28
15 R-OFFICE		600			30
16 R-OFFICE		600			32
17 R-OFFICE		600			34
18 R-OFFICE		600			36
19 R-OFFICE		600			38
20 R-OFFICE		600			40
21 R-OFFICE		600			42

Panel Schedule 1420 PNL C2  
3 Phase 4 Wire Voltage LL: 208 Voltage LG: 120

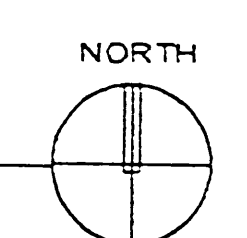
DC Device/Breaker	Device Family	Mounting SURFACE	Enclosure: NEMA 1	Available Fault Duty:	A 3 Phase
1 R-CONFERENCE		600			2
2 R-CONFERENCE		800			4
3 R-CONFERENCE		800			6
4 R-CONFERENCE		800			8
5 R-CONFERENCE		800			10
6 R-CONFERENCE		800			12
7 R-CONFERENCE		800			14
8 R-CONFERENCE		800			16
9 R-CONFERENCE		800			18
10 R-CONFERENCE		800			20
11 R-CONFERENCE		800			22
12 R-CONFERENCE		800			24
13 R-CONFERENCE		800			26
14 R-CONFERENCE		800			28
15 R-CONFERENCE		800			30
16 R-CONFERENCE		800			32
17 R-CONFERENCE		800			34
18 R-CONFERENCE		800			36
19 R-CONFERENCE		800			38
20 R-CONFERENCE		800			40
21 R-CONFERENCE		800			42



NEW 2 STORY BUILDING  
F.F.E. = 211'-0"

WASHINGTON FEDERAL SAVINGS

**SITE PLAN**  
SCALE 1"=10'-0"

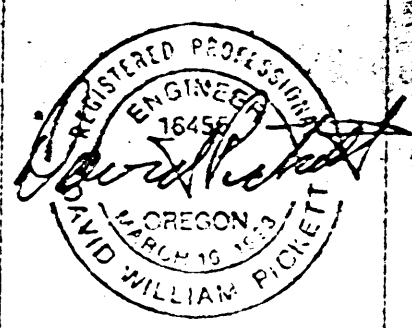


**NOTES THIS SHEET**

- 1 EXACT TRANSFORMER SIZE AND CLEARANCE REQUIREMENTS TO BE VERIFIED WITH UTILITY.
- 2 NOT USED
- 3 PROVIDE TWO 4" CONDUIT IN TRENCH WITH NON-CONDUCTIVE PULL CORD PER US WEST REQUIREMENTS. COORDINATE REQUIREMENTS WITH US WEST.
- 4 PROVIDE 3-4" CONDUIT WITH NON CONDUCTIVE PULL CORD. COORDINATE REQUIREMENTS WITH PP&L.
- 5 PROVIDE VAULT FOR EXISTING BANK. PP&L WILL INSTALL VAULT. COORDINATE ALL REQUIREMENTS WITH PP&L AND WASHINGTON FEDERAL SAVINGS. CONTACT BANK PRIOR TO INTERRUPTION OF POWER.
- 6 PROVIDE TRENCH WITH BOTTOM 36" BELOW FINISHED GRADE. INSTALL PVC CONDUIT AS REQUIRED BY PPL. PROVIDE (3) 5" CONDUITS WITH NON-CONDUCTIVE PULL CORD.
- 7 CUT, REMOVE, AND REPAIR EXISTING ASPHALT AND CEMENT TO RECONNECT SERVICE FOR BANK TO NEW UTILITY VAULT.
- 8 INSTALL CONDUIT, CONDUCTORS AND NON-CONDUCTIVE PULL CORD PER UTILITY REQUIREMENTS TO EXTEND SERVICE FROM BANK TO NEW POWER POLE AS SHOWN.
- 9 MOUNT OUTLETS ON PARAPET.
- 10 PROVIDE VAULT FOR NEW ELECTRICAL SERVICE.
- 11 INSTALL CONCRETE POSTS AROUND POWER POLES PER PP&L REQUIREMENTS.
- 12 POWER POLES TO BE PROVIDED AND INSTALLED BY PP&L FOR NEW AND EXISTING ELECTRICAL SERVICE. VERIFY CONTRACTOR REQUIREMENTS WITH UTILITY.
- 13 POLES ARE FURTHER EAST THAN INDICATED. VERIFY EXACT DISTANCE AT THE SITE OR CONTACT SERVING UTILITY.
- 14 PROVIDE FOUR (4) STEEL POSTS AROUND GENERATOR AND TRANSFORMER ENCLOSURES PER PP&L REQUIREMENTS.
- 15 PROVIDE ONE 4" EMPTY CONDUIT WITH PULL STRING WITH TELEPHONE CONDUITS FOR FUTURE FIBER OPTICS. STUB UP AT EDGE OF PROPERTY.
- 16 PROVIDE ONE 4" EMPTY CONDUIT WITH PULL STRING FOR FUTURE FIBER OPTICS. ROUTE IN 36" TRENCH. STUB UP AT LOCATION SHOWN.

**GENERAL NOTES**

1. COORDINATE ALL TELEPHONE REQUIREMENTS WITH US WEST. CONTACT LARRY WILSON (503) 399-5406 PRIOR TO EXCAVATION.
2. COORDINATE ALL POWER REQUIREMENTS WITH PPL. CONTACT JOE DUMBROWSKI, (503) 957-6177 PRIOR TO EXCAVATION.
3. PP&L REQUIRES ALL STEEL ELBOWS AND 1/4" PULL STRINGS.



REGISTERED PROFESSIONAL ENGINEER  
No. 16189  
STATE OF OREGON  
WILLIAM F. PICKETT  
1121 SW SANBORN STREET SUITE 100 PORTLAND, OREGON 97205  
TEL: (503) 247-4577  
FAX: (503) 247-4577

**ALBANY CITY HALL**  
ALBANY, OREGON  
BROADALBIN STREET

**ELECTRICAL SITE - PLAN**

REVISIONS  
DATE 1/18/95  
JOB NO. 93325-500  
DWY. CAM CHK. DSC

PROJECT NO: 93-311  
INTERFACE ENGINEERING INC.  
Consulting Engineers  
3000 SW 10TH AVENUE

**E11**

SHT. OF SHTS.  
© COPYRIGHT LRS

TIME: 01:01  
DATE: 01/18/95  
FILE: 93-311-500  
EMPLOYEE: LINDA



LET  
RUFF  
STARK ARCHITECTS  
1121 SW SHAWAN STREET SUITE 100 PORTLAND, OREGON 97205  
(503) 241-5878

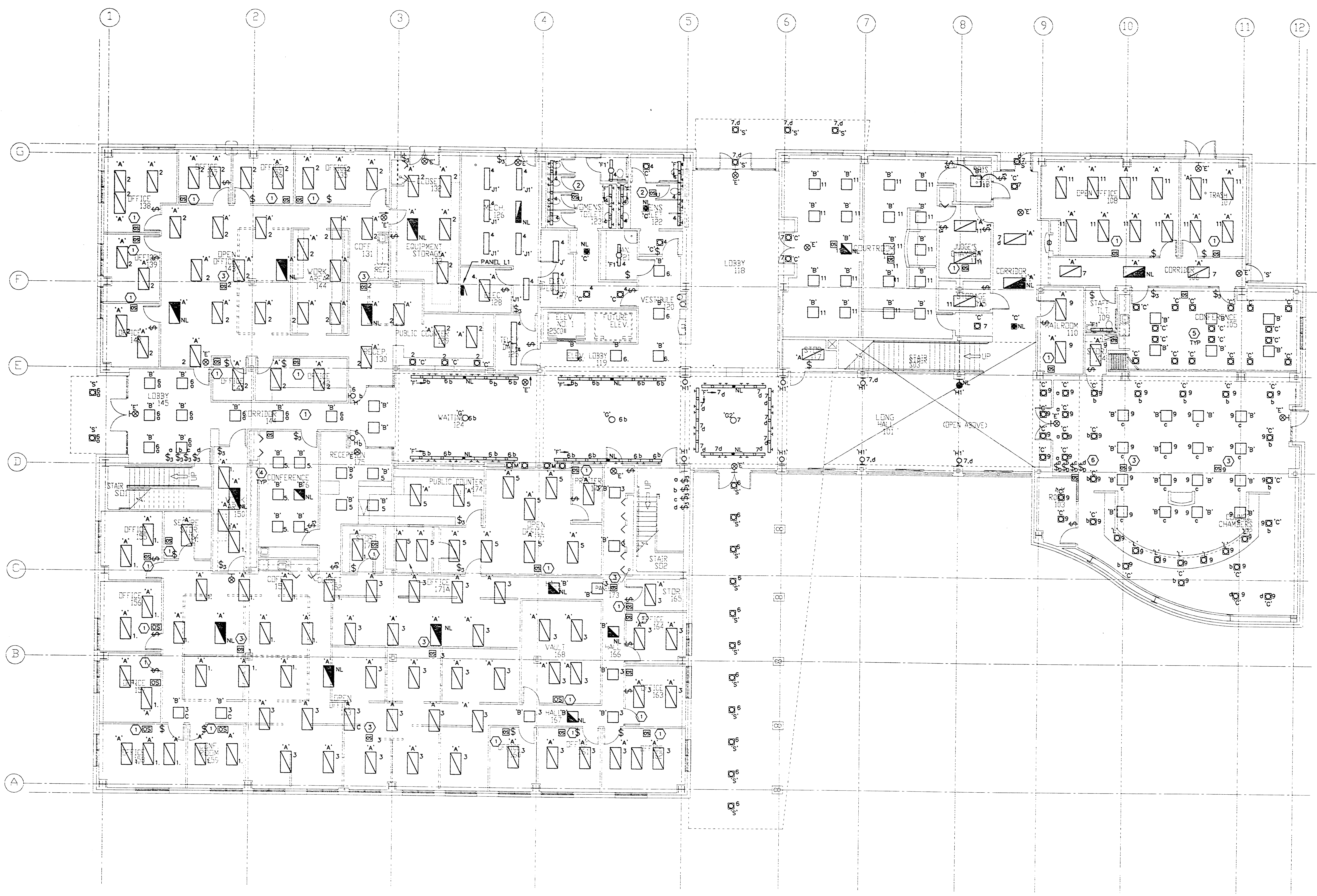
**ALBANY CITY HALL**  
ALBANY, OREGON  
BROADALBIN STREET

Interior Engineering, Inc.  
Mechanical / Electrical Consultant  
Landscape Associates  
LEPT Consulting Engineers  
R.B. Weis & Associates, Inc.  
Structural Consultant  
Civil Consultant

**FIRST FLOOR PLAN-LIGHTING**

REVISIONS  
DATE: 1/18/95  
JOB NO.: 9525-500  
DRAWN: CAM  
CHK: DSC

**E2.1**  
SHT. OF SHTS.  
© COPYRIGHT LRS



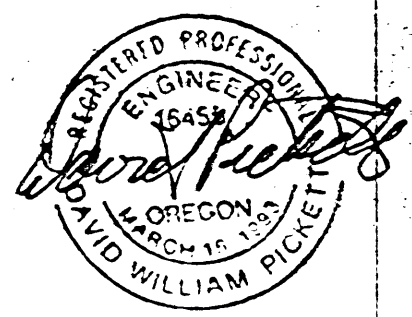
**NOTES THIS SHEET:**

1. PROVIDE PASSIVE INFRARED OCCUPANCY SENSOR, IN SERIES WITH WALL SWITCHES, ADJUSTABLE SENSITIVITY AND DIGITAL TIME DELAY. SENSOR TO COVER UP TO 1500 SQUARE FEET. WHITE FINISH. WATTSTOPPER C1-100. PROVIDE IN ALL OFFICES SEE DETAIL 4.E3.2.
2. PROVIDE ULTRASONIC OCCUPANCY SENSOR IN SERIES WITH WALL SWITCHES, ADJUST SENSITIVITY AND DIGITAL TIME DELAY. WHITE FINISH. WATTSTOPPER C1-200. PROVIDE IN ALL OPEN OFFICES. NUMBER BY EACH SENSOR SYMBOL REPRESENTS CIRCUIT IT CONTROLS.
3. PROVIDE 360° PASSIVE INFRARED OCCUPANCY SENSOR, ADJUST SENSITIVITY AND DIGITAL TIME DELAY. WHITE FINISH. WATTSTOPPER C1-200. PROVIDE IN ALL OPEN OFFICES. NUMBER BY EACH SENSOR SYMBOL REPRESENTS CIRCUIT IT CONTROLS.
4. ALL LUMINAIRES IN THIS CONFERENCE ROOM ON CIRCUIT L1-5.
5. ALL LUMINAIRES IN THIS CONFERENCE ROOM ON CIRCUIT L1-9.
6. FOUR PRESET LINEAR SLIDE DIMMERS WITH ONE INTEGRAL FACEPLATE. DIMMER CONTROLS LUMINAIRES IN CONFERENCE ROOM WITH SAME RESPECTIVE LABEL. NO SCREWS VISIBLE ON FRONT OF UNITS. RFI FILTERING, INTEGRAL VOLTAGE COMPENSATION, WHITE FINISH, POWER FAILURE MEMORY. DIMMERS 'a', 'b', and 'c' SHALL BE 600W CAPACITY LUTRON N-600P OR APPROVED SUBSTITUTE. DIMMER 'd' SHALL BE 1500W CAPACITY LUTRON N-1500P OR APPROVED SUBSTITUTE.

**GENERAL NOTES**

1. EXCEPT WHERE OTHERWISE NOTED, ALL LUMINAIRES ON THIS FLOOR ARE CONNECTED TO PANEL L1.
2. N.L. NOTATION BY LUMINAIRE INDICATES NIGHT LIGHTING. ALL NIGHT LIGHTING ON CIRCUIT EM-1. LUMINAIRES SHALL REMAIN ON AT ALL TIMES.
3. IN OPEN OFFICE AREAS, CIRCUIT POSITION FOR EACH LUMINAIRE INDICATED BY LABELING.
4. ALL LUMINAIRES IN ENCLOSED ROOMS ARE CONTROLLED BY ALL ROOM WALL SWITCHES UNLESS OTHERWISE NOTED.
5. ALL TYPE 'E' FIXTURES ON CIRCUIT EM-1.

**FIRST FLOOR PLAN - LIGHTING**  
SCALE: 1/8"=1'-0"  
NORTH



INTERFAC ENGINEERING, INC.  
 1221 SW SALMON STREET SUITE 100 PORTLAND, OREGON 97205  
 (503) 251-2077

ALBANY CITY HALL  
 ALBANY, OREGON

BROADALBIN STREET

Interface Engineering, Inc.  
 Mechanical / Electrical Consultant  
 Landscape Consultant

KEFF Consulting Engineers  
 Mechanical / Electrical Consultant  
 Landscape Consultant

W.E. Wells & Associates, Inc.  
 Civil Consultant

FIRST FLOOR PLAN-POWER AND SIGNAL

REVISIONS	DATE	BY	CHK	APP
1	7/18/95	DWY	CAM	

E2.2

SHT. OF SHTS.

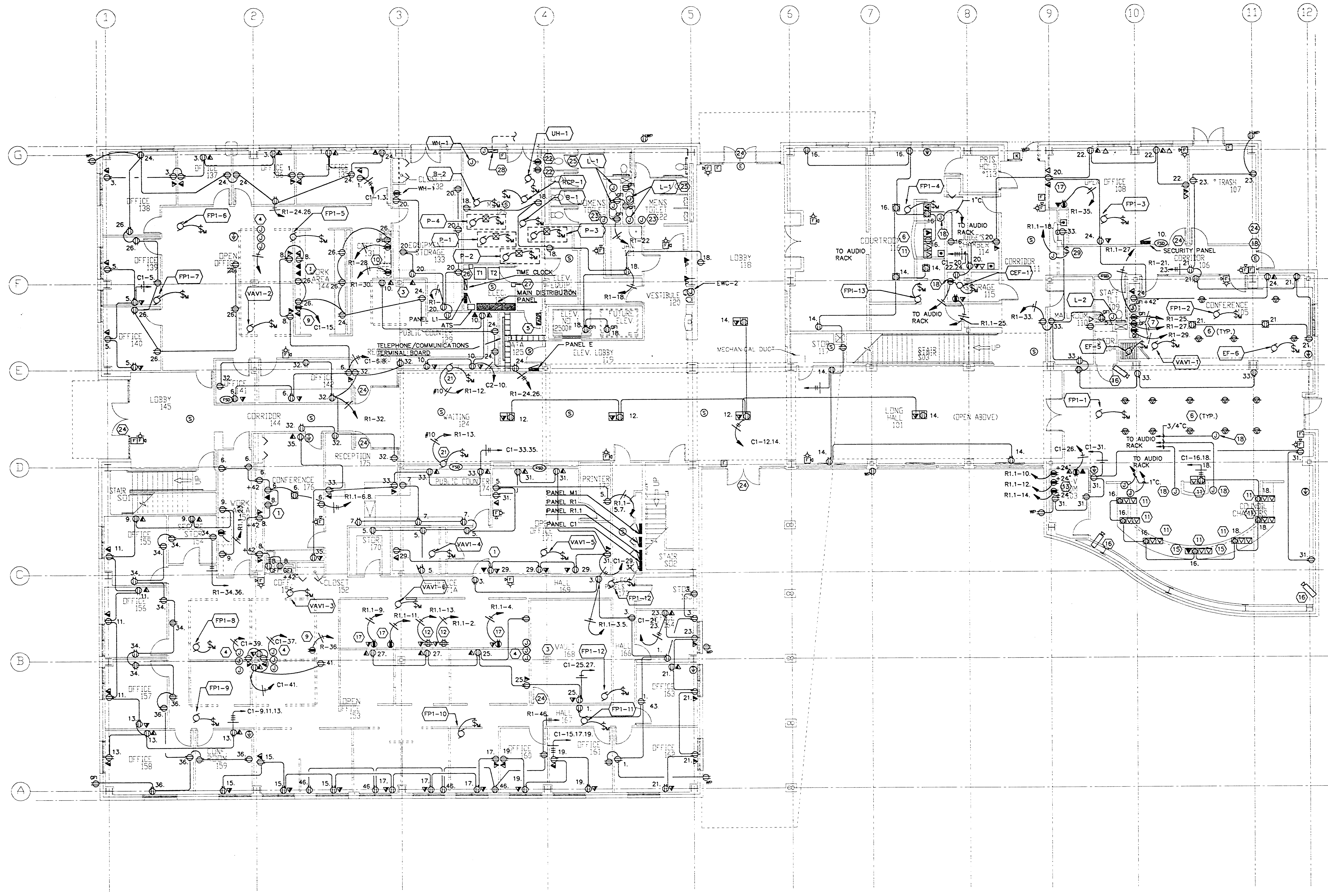
© COPYRIGHT LRS

**NOTES THIS SHEET**

- 1 PROVIDE CONDUIT FOR TWO-WAY RADIO. VERIFY EXACT LOCATIONS WITH ARCHITECTURAL DRAWINGS.
- 2 PROVIDE CONDUIT FOR AUDIO SYSTEM INSTALLATION IN COURT ROOM AND COUNCIL CHAMBERS. VERIFY EXACT LOCATIONS WITH ARCHITECTURAL DRAWINGS.
- 3 NOT USED.
- 4 PROVIDE POWER, DATA AND TELEPHONE FOR PARTITIONS. COORDINATE WITH FURNITURE EQUIPMENT MANUFACTURER PRIOR TO INSTALLATION OF WIRING IN PARTITIONS. ACCESS THROUGH FLOOR OR COLUMN AS INDICATED.
- 5 PROVIDE 4" X 12" CABLE RACK. STUB UP FOUR 4" CONDUITS TO THE SECOND FLOOR. STUB UP AND CAP TWO 4" CONDUITS TO THE THIRD FLOOR FOR FUTURE USE. REFER TO TELE/DATA DRAWINGS.
- 6 PROVIDE CONDUIT FOR MICROPHONE AND SPEAKERS FOR CITY COUNCIL CHAMBERS AND MUNICIPAL COURT. PROVIDE 3/4" CONDUIT TO EACH SPEAKER. FOR EXACT EQUIPMENT LOCATIONS AND SPEAKER LOCATIONS REFER TO ARCH. AND ACOUSTICAL DRAWINGS.
- 7 INSTALL DEDICATED GFI RECEPTACLES FOR DISHWASHER, REFRIGERATOR AND MICROWAVE.
- 8 NOT USED.
- 9 INSTALL DEDICATED RECEPTACLE FOR COPIER.
- 10 INSTALL DEDICATED RECEPTACLE FOR REFRIGERATOR AND MICROWAVE.
- 11 OUTLETS TO BE MOUNTED IN THE CASEWORK IN THE COUNCIL AND JUDGES TABLE.
- 12 PROVIDE TWO DEDICATED 20 AMP FOURPLEX RECEPTACLES IN DATA ROOM FOR FILESERVERS AND TELEPHONE.
- 13 PROVIDE THREE DEDICATED 20 AMP CIRCUITS FOR AUDIO VISUAL EQUIPMENT. REFER TO SOUND SYSTEM DRAWINGS FOR EXACT EQUIPMENT LOCATION.
- 14 PROVIDE CONDUIT FOR A-V CAMERAS IN CITY COUNCIL CHAMBERS. COORDINATE REQUIREMENTS WITH ACOUSTICAL CONTRACTOR.
- 15 PROVIDE 3/4" CONDUIT FOR SPEAKERS LOCATED AT COUNCIL CHAMBERS TABLE. FOR EXACT LOCATIONS AND REQUIREMENTS REFER TO ACOUSTICAL DRAWINGS.
- 16 PROVIDE OUTLET AND CONDUIT FOR VIDEO CAMERAS. COORDINATE REQUIREMENTS WITH ACOUSTICAL CONTRACTOR. REFER TO R1.1 REFER TO PANEL SCHEDULES.
- 17 PROVIDE DEDICATED DUPLEX RECEPTACLES FOR FILE SERVERS.
- 18 PROVIDE CONNECTIONS AND CONDUIT FOR AUDIO EQUIPMENT. REFER TO ACOUSTICAL DRAWINGS FOR EXACT REQUIREMENTS. REFER TO PANEL R1.1 FOR CIRCUITING.
- 19 NOT USED.
- 20 PROVIDE 3/4" CONDUIT FOR SPEAKERS LOCATED IN COURTROOM. FOR EXACT LOCATIONS AND REQUIREMENTS REFER TO ACOUSTICAL DRAWINGS.
- 21 PROVIDE CONNECTIONS FOR ROLL-DOWN SECURITY FIRE DOORS. REFER TO ARCHITECTURAL DRAWINGS AND SPECIFICATIONS FOR DETAILS. ROUTE 2#10, 1#10 GND. TO PANEL R1 AS INDICATED ON DRAWING.
- 22 DEDICATED CIRCUITS C1-2.4 FOR DDC TERMINAL AND PANEL. REFER TO ARCHITECTURAL DRAWINGS AND SPECIFICATIONS FOR DETAILS.
- 23 DEDICATED CIRCUIT FOR HAND DRYERS.
- 24 PROVIDE 1" EMPTY CONDUIT FOR FUTURE ENTRY KEY PADS
- 25 PROVIDE JUNCTION BOX FOR SINGLE POINT CONNECTION TO INFRARED SENSOR FOR FAUCET. REFER TO DIVISION 15 CONTRACT DOCUMENTS FOR SENSOR MANUFACTURER, MODEL AND INSTALLATION DIRECTIONS.
- 26 400A ENCLOSED DISCONNECT SWITCH FOR TRANSFORMER T1.
- 27 250A ENCLOSED DISCONNECT SWITCH FOR TRANSFORMER T2.
- 28 PROVIDE J-BOX TO IRRIGATION CONTROL PANEL MOUNTED WITH BASE OF PANEL +54" A.F.F. PROVIDE 1" C. STUBBED DOWN FROM PANEL TO 18" BELOW GRADE. COORDINATE TERMINATION OF CONDUIT WITH LANDSCAPE ARCHITECT DOCUMENTS. MOUNT PANEL AS CLOSE TO DOUBLE DOORS AS POSSIBLE.
- 29 PROVIDE CONNECTION FOR ROLL DOWN FIRE DOOR.

**GENERAL NOTES**

1. DATA AND TELEPHONE SYMBOLS GROUPED TOGETHER ARE INTENDED TO SHOW QUANTITIES AND LOCATIONS ONLY. PHONE AND DATA OUTLETS SHOWN IN GROUPS CAN BE IN THE SAME HUD RING. REFER TO COMMUNICATIONS DRAWINGS FOR EXACT LOCATIONS.
2. REFER TO MECHANICAL DRAWINGS FOR EXACT LOCATIONS OF MECHANICAL EQUIPMENT.
3. ALL FIRE/SMOKE DAMPERS SHALL BE CONNECTED TO THE CIRCUIT POSITION INDICATED ON PANEL R1. EXAMPLE: FSD 12 DESIGNATES A DAMPER ON CIRCUIT 12 OF PANEL R1.



**FIRST FLOOR PLAN - POWER AND SIGNAL**

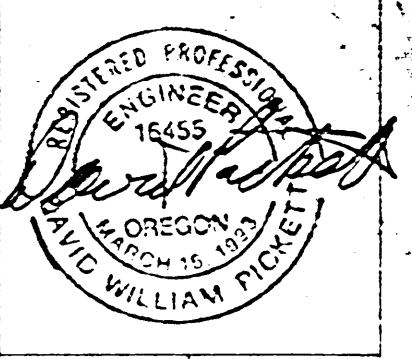
SCALE: 1/8"=1'-0"

NORTH

TIME: 12:00:05  
 DATE: 01-18-1995  
 FILE: 97-93311

PROJECT NO: 92-311

INTERFAC ENGINEERING, INC.  
 Consulting Engineers



LEE RUFF  
STARK ARCHITECTS  
131 SW HANSON STREET SUITE 100 PORTLAND, OREGON 97205  
(503) 271-4727  
FAX (503) 271-2077

**ALBANY CITY HALL**  
ALBANY, OREGON  
BROADALBIN STREET  
Structural Consultant: RFF Consulting Engineers  
Civil Consultant: W.B. Wells & Associates, Inc.  
Mechanical / Electrical Consultant: Interface Engineering, Inc.  
Landscape Consultant: Resenfeld Associates

**SECOND FLOOR PLAN-LIGHTING**

REVISIONS	DATE	BY	CHK	DWG
	1/8/05			
	9/25-5/00			
		TWK	CAM	DSC

**E2.3**  
SHT. OF SHTS.  
© COPYRIGHT 1985



**SECOND FLOOR PLAN - LIGHTING**  
SCALE: 1/8"=1'-0"  
NORTH

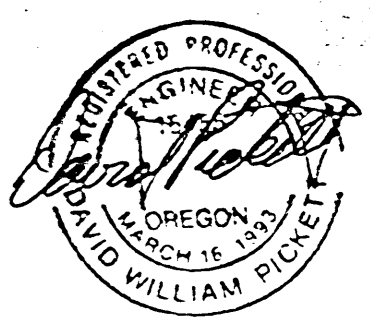
**NOTES THIS SHEET:**

- ① PROVIDE PASSIVE INFRARED OCCUPANCY SENSOR, ADJUSTABLE SENSITIVITY AND DIGITAL TIME DELAY SENSOR TO COVER UP TO 1500 SQUARE FEET. WHITE FINISH. WATTSTOPPER C1-100. PROVIDE IN ALL OFFICES. SEE DETAIL 4, SHEET E3.2.
- ② PROVIDE ULTRASONIC SENSOR IN SERIES WITH WALL SWITCHES TO COVER UP TO 500 SQUARE FEET. WHITE FINISH. WATTSTOPPER W-500A. PROVIDE IN ALL RESTROOMS.
- ③ PROVIDE 360° PASSIVE INFRARED OCCUPANCY SENSOR, ADJUST SENSITIVITY AND DIGITAL TIME DELAY. WHITE FINISH. WATTSTOPPER C1-200. PROVIDE IN ALL OPEN OFFICES. NUMBER BY EACH SENSOR SYMBOL REPRESENTS CIRCUIT IT CONTROLS.
- ④ CORRIDOR WALL SWITCHES:  
SWITCH 'A' CONTROLS ALL CORRIDOR LUMINAIRES ON CIRCUIT L2-4  
SWITCH 'B' CONTROLS ALL CORRIDOR LUMINAIRES ON CIRCUIT L2-6  
SWITCH 'C' CONTROLS ALL CORRIDOR LUMINAIRES ON CIRCUIT L2-8  
SWITCH 'D' CONTROLS ALL CORRIDOR LUMINAIRES ON CIRCUIT L2-10  
SWITCH 'E' CONTROLS ALL CORRIDOR LUMINAIRES ON CIRCUIT L2-12  
SWITCH 'F' CONTROLS ALL CORRIDOR LUMINAIRES ON CIRCUIT L2-14  
SWITCH 'G' CONTROLS ALL CORRIDOR LUMINAIRES ON CIRCUIT L2-16  
SWITCH 'H' CONTROLS ALL CORRIDOR LUMINAIRES ON CIRCUIT L2-18
- ⑤ ALTERNATE E  
DELETE 28 TYPE 'F2' LUMINAIRES AND ASSOCIATED LIGHT COVE ABOVE LOBBY 201 AND ADJACENT TWO-STORY VOLUME. PROVIDE 10 TYPE 'N' LUMINAIRES ON 12" CENTERS, WALL MOUNTED IN THEIR PLACE.

**GENERAL NOTE:**

1. ADDITIVE ALTERNATE: PROVIDE TWENTY TYPE 'N' LUMINAIRES ON 12" CENTERS IN COVE IN LONG HALL.
2. EXCEPT WHERE OTHERWISE NOTED, ALL LUMINAIRES ON THIS FLOOR ARE CONNECTED TO PANEL L2.
3. N.L. DESIGNATION BY LUMINAIRE INDICATES NIGHT LIGHTING. LUMINAIRE SHALL REMAIN ON AT ALL TIMES. ALL NIGHT LIGHTING ON CIRCUIT EM-2.
4. ALL LUMINAIRES IN ENCLOSED ROOMS ARE CONTROLLED BY ALL ROOM WALL SWITCHES UNLESS OTHERWISE NOTED.
5. ALL TYPE 'E' FIXTURES ON CIRCUIT EM-3.

DATE: 06.03.05  
DWG NO.: 99-03311  
FILE: 99-03311



LEE  
RUFF  
STARKO ARCHITECTS  
1121 SW SAUMON STREET SUITE 100 PORTLAND, OREGON 97205  
(503) 271-1721

**ALBANY CITY HALL**  
ALBANY, OREGON  
BROADALBIN STREET

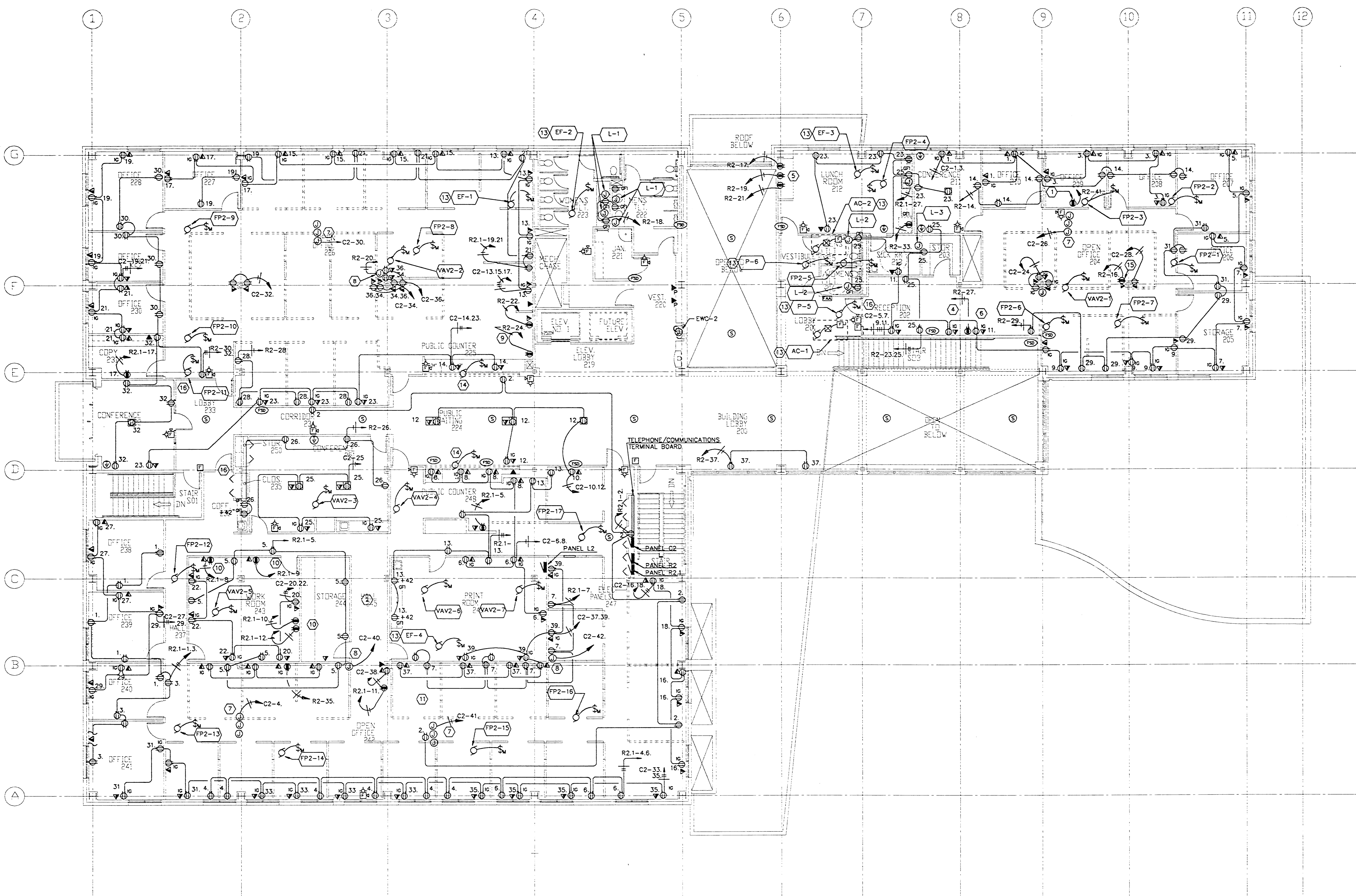
Interface Engineering, Inc.  
Mechanical / Electrical Consultant  
Rosenfield Associates  
KIFF Consulting Engineers  
W.B. Wells & Associates, Inc.  
Civil Consultant

**SECOND FLOOR PLAN-POWER AND SIGNAL**

REVISIONS	DATE	BY	CHK	DSC
	1/16/95			

**E2.4**

SHT. \_\_\_ OF \_\_\_ SHTS.  
© COPYRIGHT LRS



**NOTES THIS SHEET**

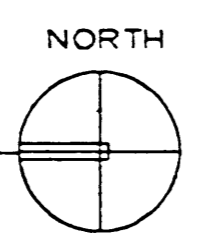
- 1) NOT USED.
- 2) PROVIDE CONDUIT FOR TWO-WAY RADIO. VERIFY EXACT LOCATION WITH ARCHITECTURAL DRAWINGS.
- 3) NOT USED.
- 4) MOUNT BOX ON COUNTER FOR BUILT IN COPIER.
- 5) INSTALL DEDICATED RECEPTACLES FOR VENDING MACHINES.
- 6) INSTALL DEDICATED RECEPTACLES FOR COPY MACHINE.
- 7) PROVIDE DATA TELEPHONE AND POWER FOR PANEL PARTITIONS. COORDINATE WITH FURNITURE EQUIPMENT MANUFACTURER PRIOR TO INSTALLING WIRING IN PARTITIONS.
- 8) PROVIDE POWER FOR PANEL PARTITIONS. COORDINATE WITH FURNITURE EQUIPMENT MANUFACTURER PRIOR TO INSTALLING WIRING IN PARTITIONS.
- 9) INSTALL DEDICATED RECEPTACLES FOR COPIER AND PRINTER.
- 10) INSTALL DEDICATED RECEPTACLES FOR PLOTTERS AND DIGITIZERS IN ENGINEERS WORK ROOM.
- 11) INSTALL DEDICATED RECEPTACLES FOR LASER PRINTER.
- 12) NOT USED.
- 13) LOCATED ON ROOF.
- 14) PROVIDE CONNECTIONS FOR ROLL DOWN SECURITY FIRE DOORS. REFER TO ARCHITECTURAL DRAWINGS AND SPECIFICATIONS FOR DETAILS.
- 15) DEDICATED POWER AND PHONE LINE FOR FAX MACHINE.
- 16) PROVIDE 1" EMPTY CONDUITS FOR FUTURE ENTRY KEY PADS.

**GENERAL NOTES**

- 1. DATA AND TELEPHONE SYMBOLS GROUPED TOGETHER ARE INTENDED TO SHOW QUANTITIES AND LOCATIONS ONLY. PHONE AND DATA OUTLETS SHOWN IN GROUPS CAN BE IN THE SAME MUD RING. REFER TO COMMUNICATIONS DRAWINGS FOR EXACT LOCATIONS.
- 2. REFER TO MECHANICAL DRAWINGS FOR EXACT LOCATIONS OF MECHANICAL EQUIPMENT.
- 3. ALL FIRE/SMOKE DAMPERS SHALL BE CONNECTED TO THE CIRCUIT POSITION INDICATED ON PANEL R1. EXAMPLE: FSD 12. DESIGNATES A DAMPER ON CIRCUIT 12 OF PANEL R1.

**SECOND FLOOR PLAN - POWER AND SIGNAL**

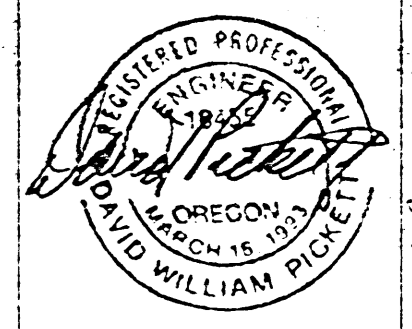
SCALE: 1/8"=1'-0"



TIME: 12:44:05  
DATE: 01-18-1995  
FILE: 95-03311

PROJECT NO: 93-311  
DATE: 1/16/95  
JOB NO: 3125-300  
DRAWN: CAM  
CHECKED: DSC

INTERFACE ENGINEERING, INC.  
Consulting Engineers



LEE  
DUFF  
STARK  
ARCHITECTS  
1121 SW SALMON STREET SUITE 100 PORTLAND, OREGON 97205  
(503) 241-1171

ALBANY CITY HALL  
ALBANY, OREGON  
BROADALBIN STREET

Interface Engineering, Inc.  
Rosenfeld Associates  
Mechanical / Electrical Consultant  
Landscape Consultant  
Structural Consultant  
KFF Consulting Engineers  
ME, Wells & Associates, Inc.  
Civil Consultant

ONE-LINE POWER RISER DIAGRAM

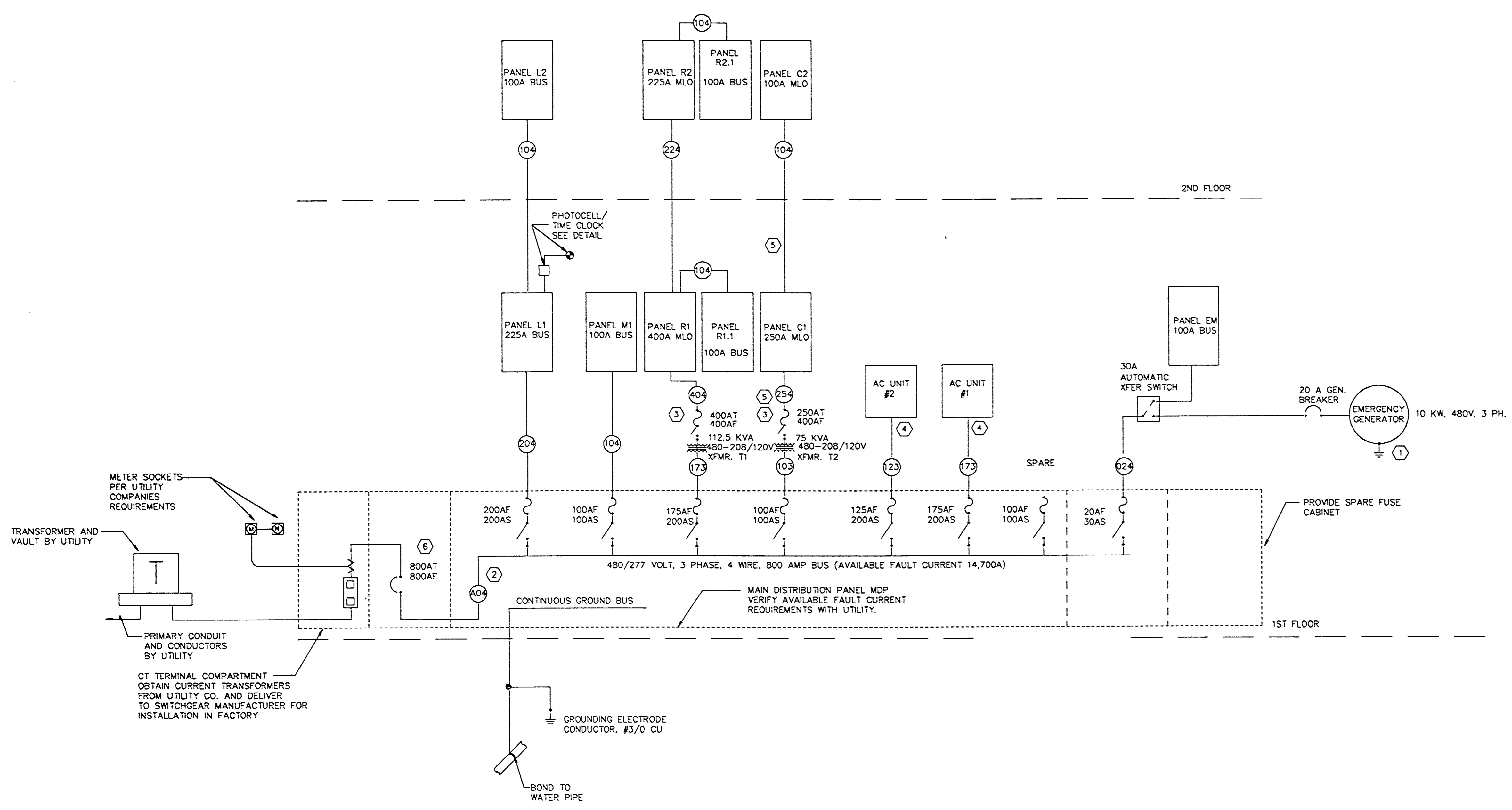
REVISIONS	
DATE	7/19/95
JOB NO.	9325-500
DWY. CAM	CHK DBC

E3.1  
SHT. \_\_\_ OF \_\_\_ SHTS.  
© COPYRIGHT LRS

- ### NOTES ONE-LINE DIAGRAM
- BOND TO MAIN DISTRIBUTION GROUND PER NEC ARTICLE 250.
  - NEUTRAL SHALL BE GROUNDED AT PANELBOARD OR DISCONNECT SWITCH.
  - BOND NEUTRAL AND GROUND TOGETHER AT TRANSFORMER SECONDARY.
  - DISCONNECT SWITCH PROVIDED BY EQUIPMENT MANUFACTURER.
  - PROVIDE ISOLATED GROUND WITH DEDICATED NEUTRALS.
  - PROVIDE 100% RATED BREAKER.

### COPPER FEEDER SCHEDULE

024	4-#12 CU., 1-#12 CU. GND., IN 1-1/2".
103	3-#2 CU., 1-#8 CU. GND., IN 1-1/2".
104	4-#2 CU., 1-#8 CU. GND., IN 1-1/2".
123	3-#1 CU., 1-#6 CU. GND., IN 2"
153	3-#1/0 CU., 1-#6 CU. GND., IN 2"
173	3-#2/0 CU., 1-#6 CU. GND., IN 2"
204	4-#2/0 CU., 1-#6 CU. GND., IN 2"
223	3-#4/0 CU., 1-#4 CU. GND., IN 2-1/2".
224	4-#4/0 CU., 1-#4 CU. GND., IN 2-1/2".
254	4-#250 KCMIL CU., 1-#4 CU. GND., IN 3".
404	2 SETS OF (4-#3/0, 1-#3 CU. GND., IN 2").
A04	3 SETS OF (4-#400 KCMIL CU., 1-#2/0 CU. GND., IN 3-1/2").

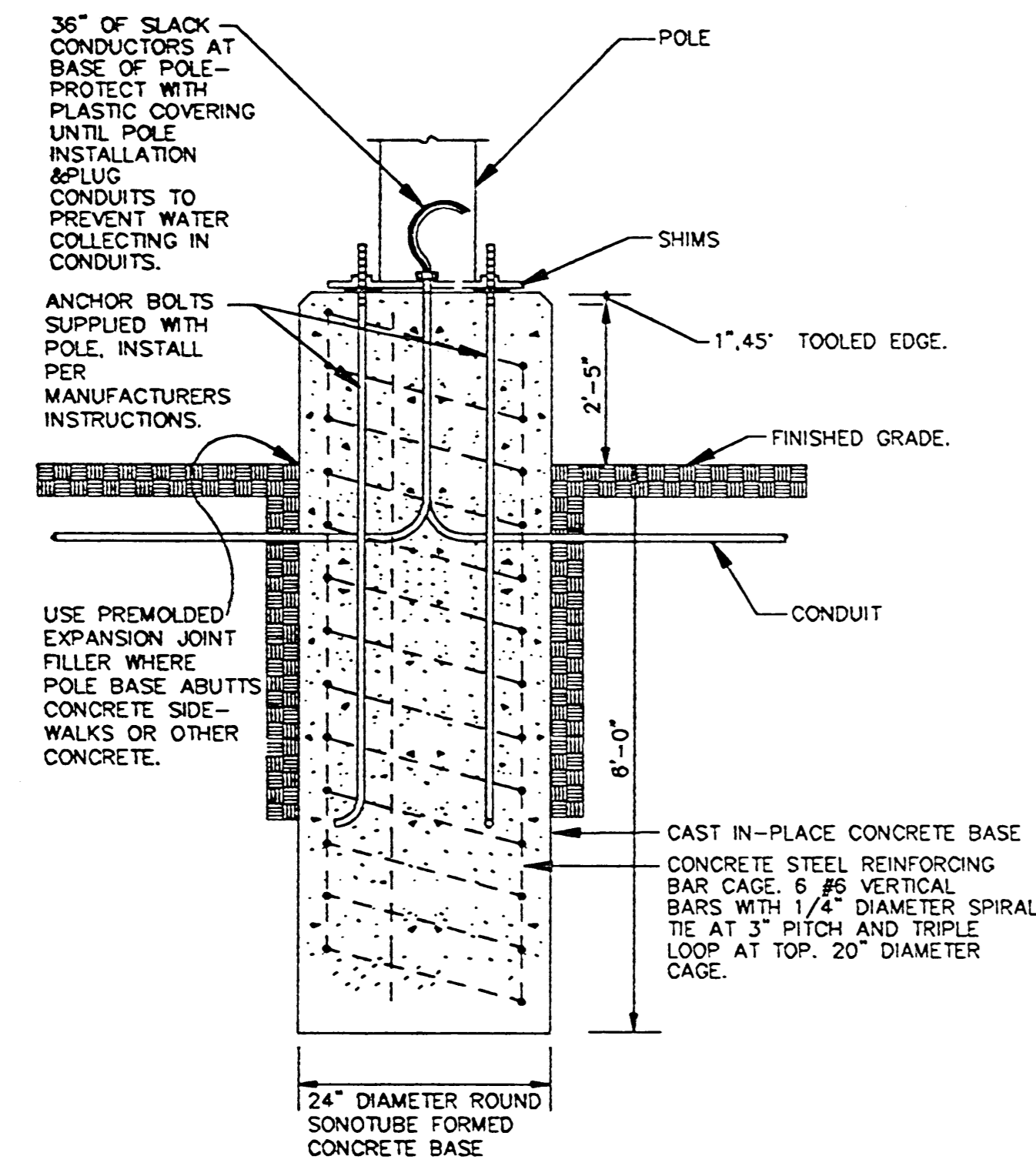


**1. ONE-LINE POWER RISER DIAGRAM**  
NO SCALE

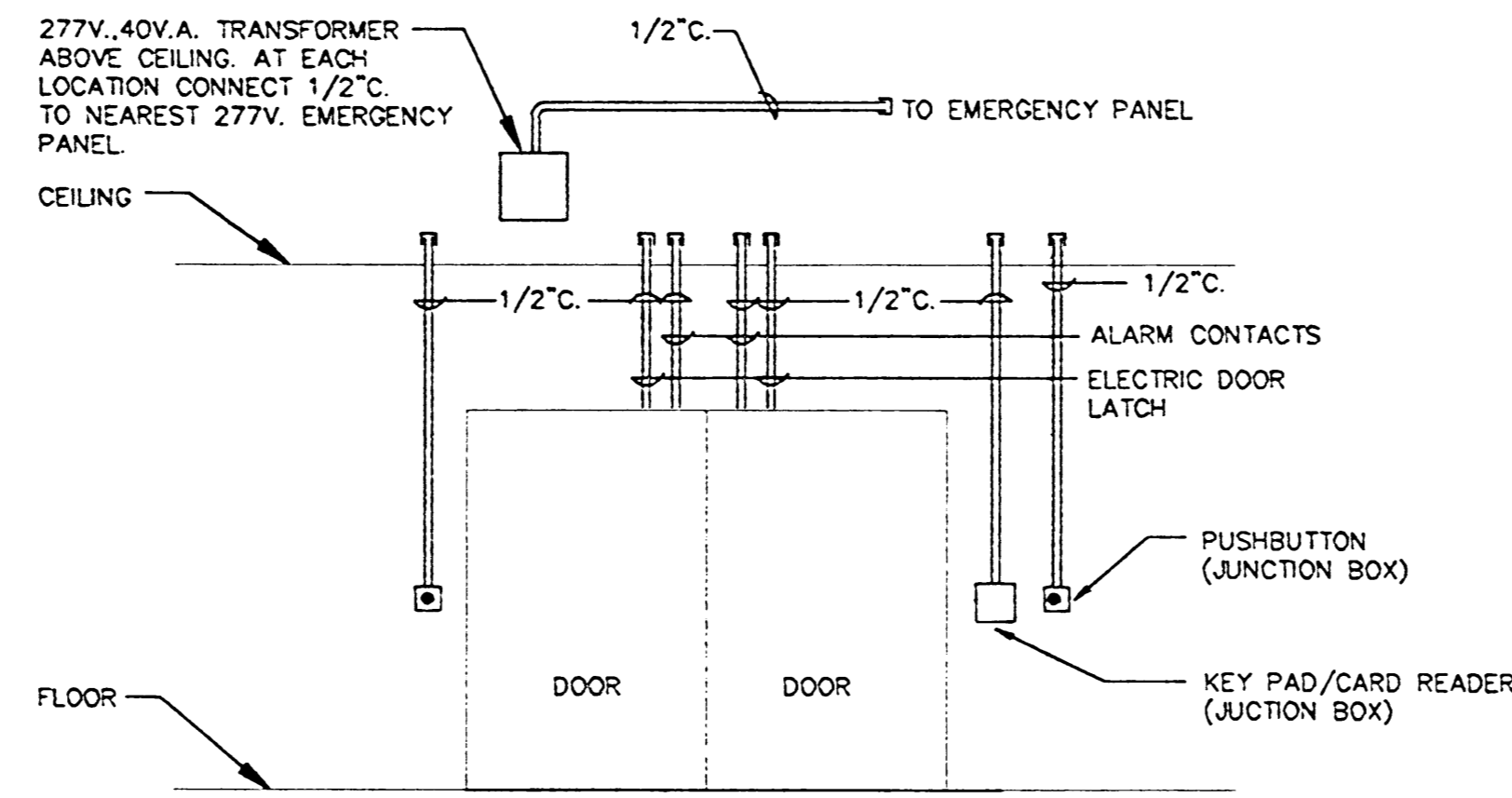
PROJECT NO.: 93-311  
500 SE Lake Road, Medford, Oregon 97504  
INTERFACE ENGINEERING INC.  
Consulting Engineers  
823 8th Street NE, Salem, Oregon 97301

TIME: 09:20:05  
DATE: 01-18-1995  
FILE: 93-3311

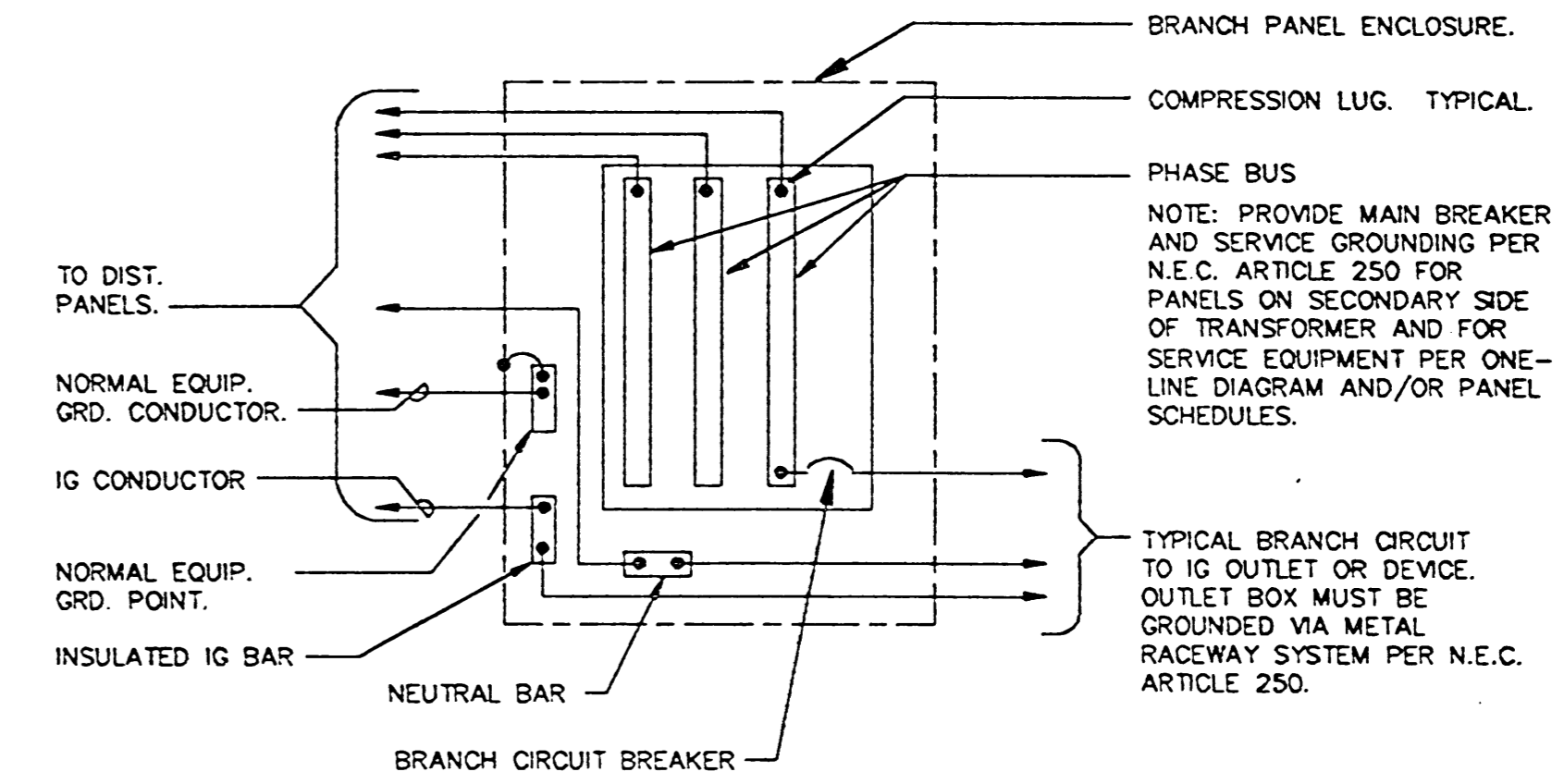




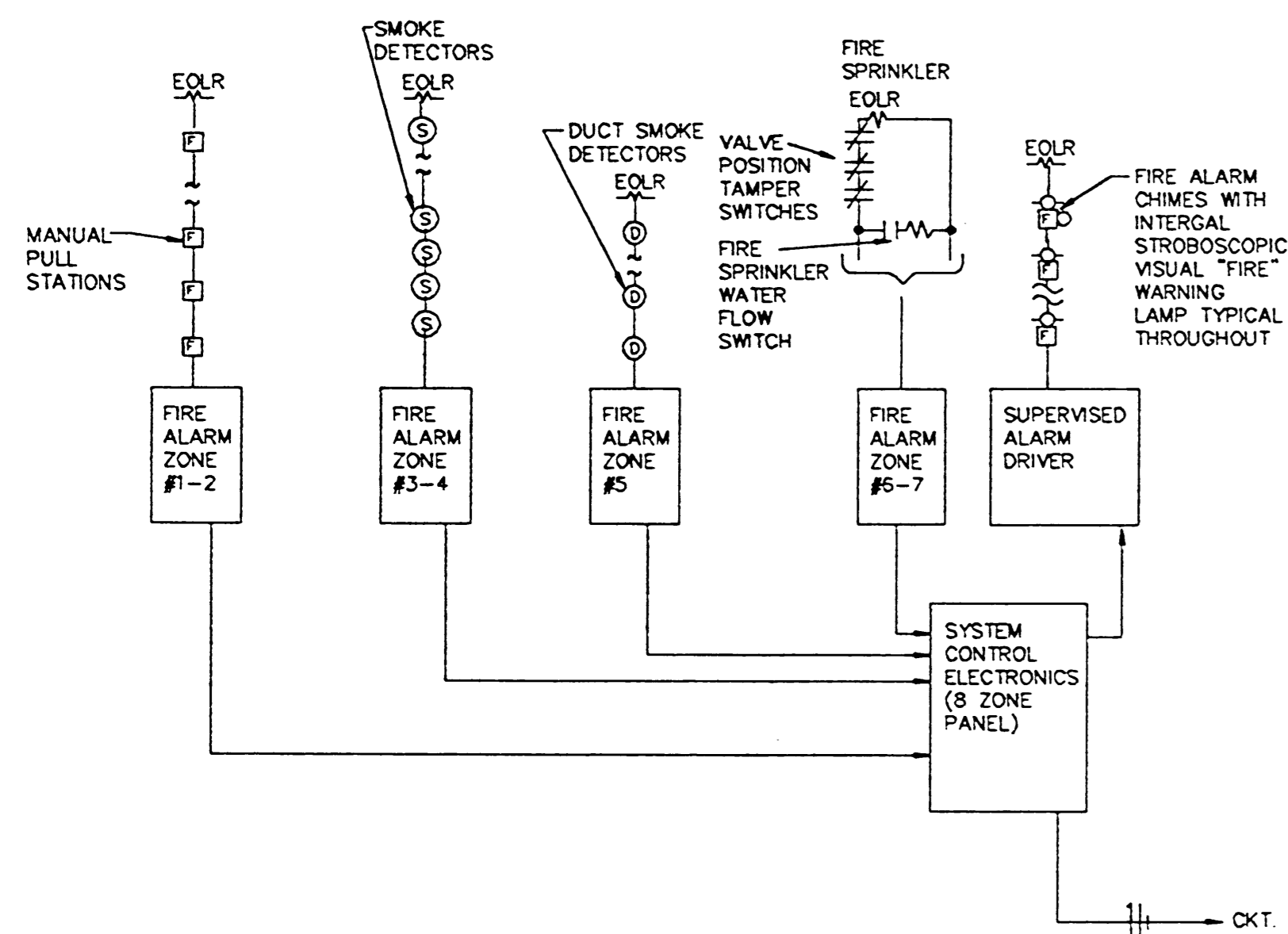
1 SECTION - A.L.S. ANCHOR BASE  
E3.2 NO SCALE D102



3 KEYPAD/CARD READER ACCESS DOOR DETAIL  
E3.2 NO SCALE 16729 D388

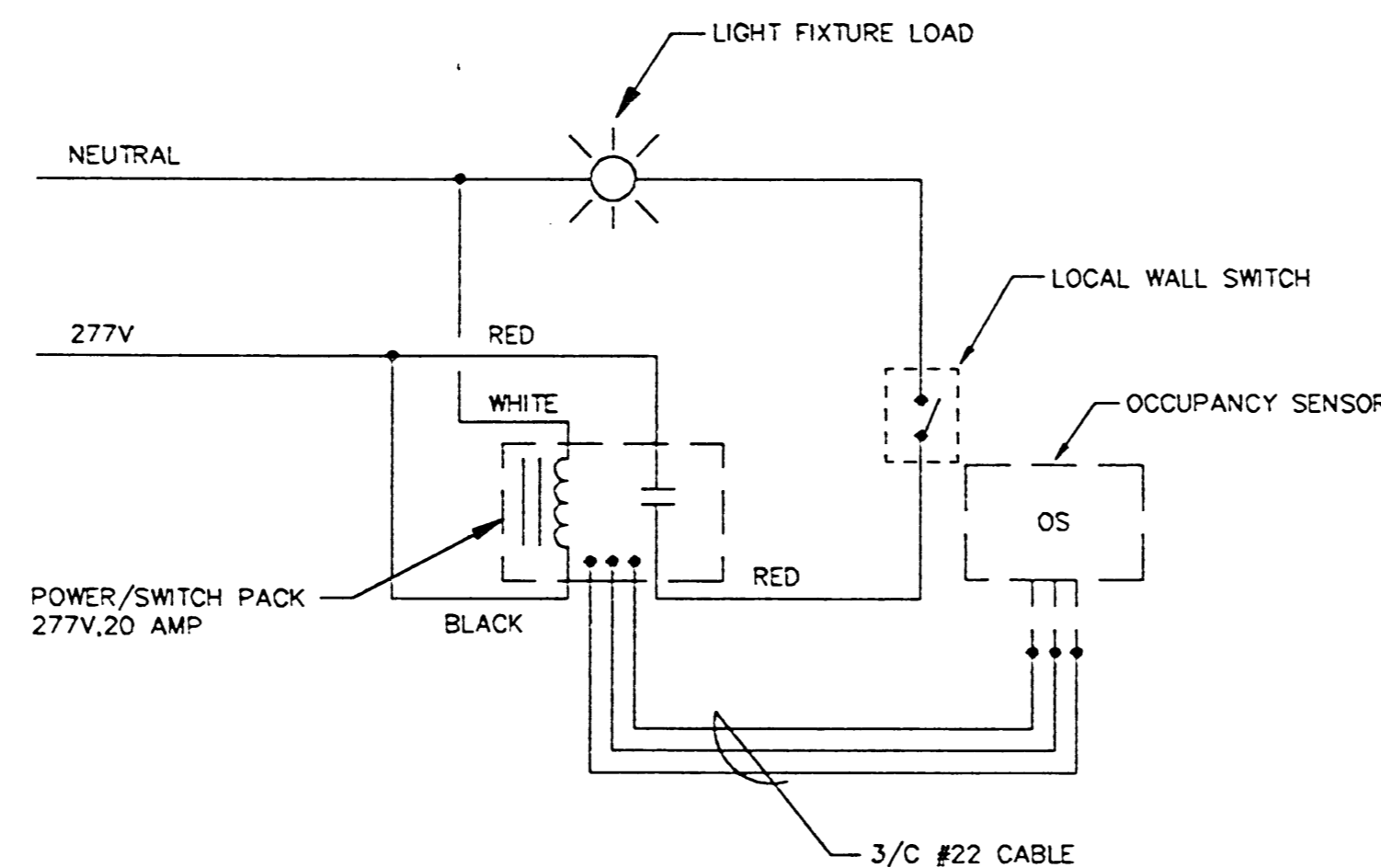


5 TYPICAL BRANCH PANEL W/ISOLATED GROUND  
E3.2 NO SCALE 16470 D41

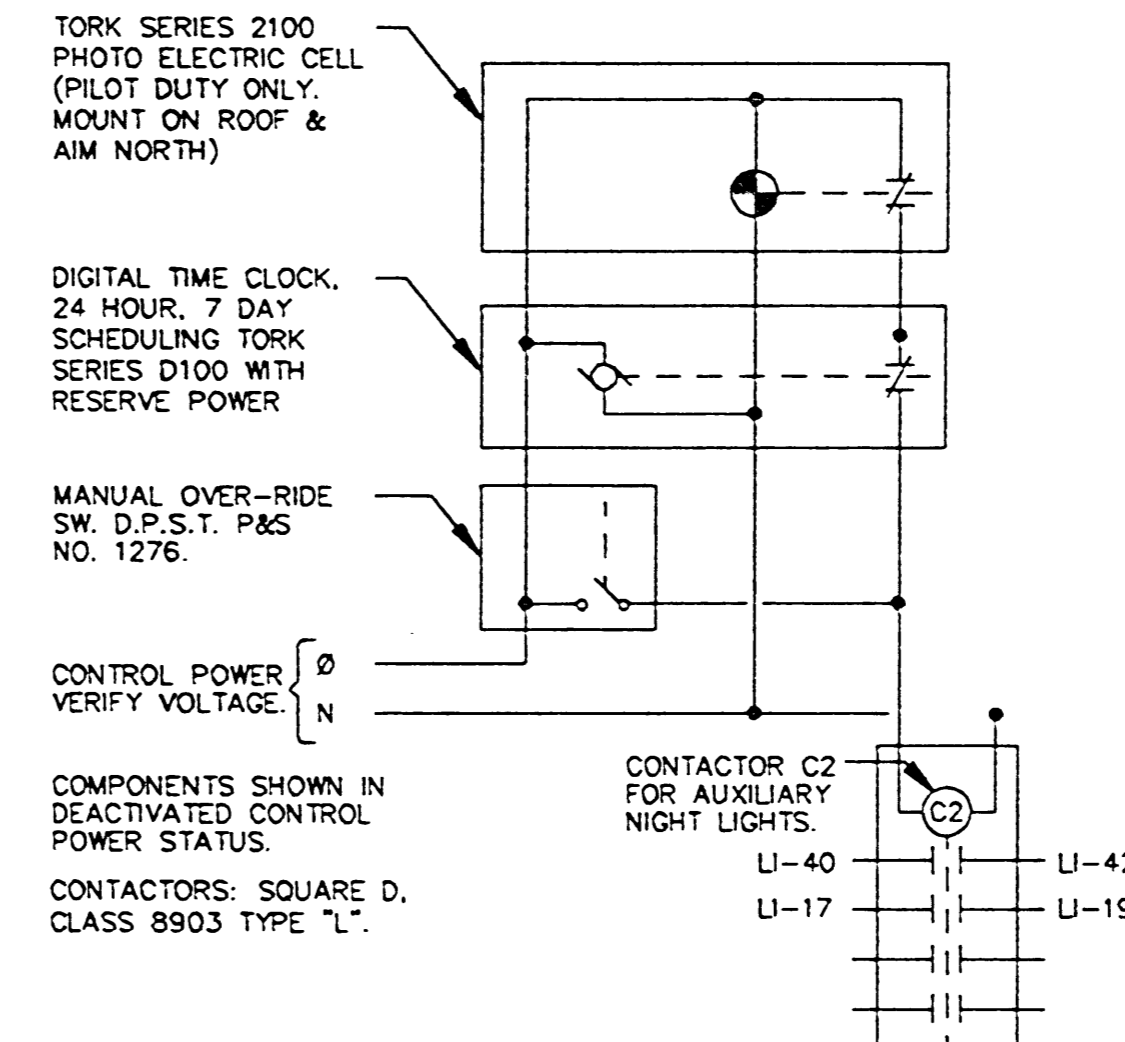


2 FIRE ALARM ONE LINE DIAGRAM  
E3.2 NO SCALE

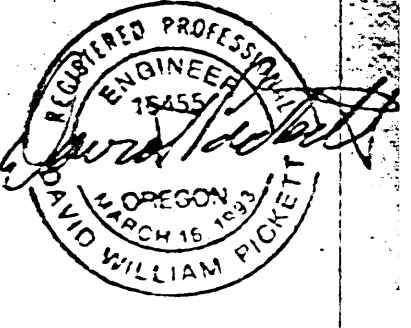
- FIRE ALARM GENERAL NOTES
1. FIRE ALARM SYSTEM SHALL BE A COMPLETE SYSTEM AS REQUIRED BY STATE AND LOCAL AUTHORITIES.
  2. DEVICES SHOWN ON RISER DIAGRAM DO NOT REFLECT THE TOTAL NUMBER REQUIRED. SEE FLOOR PLANS, SPECIFICATIONS, NFPA, NEC, AND LOCAL AUTHORITIES FOR QUANTITIES AND LOCATIONS.
  3. DEVICES SHOWN ON THE DRAWINGS ARE REQUIRED IN ADDITION TO ALL DEVICES REQUIRED BY NFPA, NEC, STATE AND LOCAL AUTHORITIES.
  4. REFER TO MECHANICAL DRAWINGS FOR EXACT LOCATIONS OF DUCT SMOKE DETECTORS.
  5. PROVIDE FOR ELEVATOR RECALL PER SPECIFICATIONS.



4 OCCUPANCY SENSOR WIRING DIAGRAM  
E3.2 NO SCALE D217



6 EXTERIOR LIGHTING CONTROL  
E3.2 NO SCALE 16900 D207

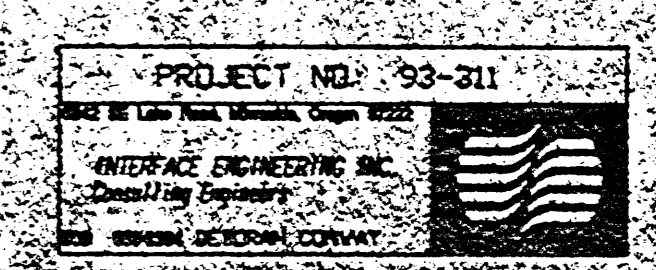


LEE  
RUFF  
STARK ARCHITECTS  
111 SW BANNON STREET SUITE 100 PORTLAND, OREGON 97205  
(503) 271-1172  
FAX (503) 271-2077

ALBANY CITY HALL  
ALBANY, OREGON  
BROADALBIN STREET  
Mechanical / Electrical Consultant: Interface Engineering, Inc.  
Landscape Consultant: Rosenfeld Associates  
Structural Consultant: Ruff Consulting Engineers  
Civil Consultant: W.B. Wells & Associates, Inc.

DETAILS AND SCHEDULES

NO.	DATE	DESCRIPTION
1	1/18/85	DATE
2	3/25/85	JOB NO.
3		PRINT: CAM
4		CHK: DBC



E3.2