

RESOLUTION NO. 6169

A RESOLUTION AUTHORIZING A FARM LEASE OF SOUTH ALBANY COMMUNITY PARK TO
EHRlich FARMS, LLC

WHEREAS, the City of Albany previously purchased 26.6 acres on Lochner Road to establish the South Albany Community Park for future development, as shown on Exhibit A (attached); and

WHEREAS, the City does not plan to develop the park site in the foreseeable future; and

WHEREAS, Ehrlich Farms previously farmed and wishes to continue to farm this property until park development occurs; and


WHEREAS, a lease has been negotiated to allow farm use on the park until August 31, 2015 unless terminated sooner by either party; and

WHEREAS, an annual rent of \$2,098 shall be paid to the City by Ehrlich Farms LLC.

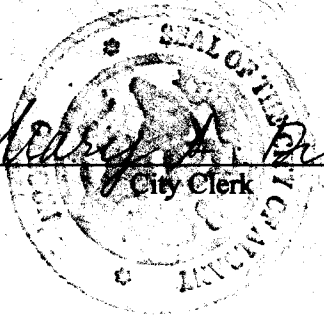

NOW, THEREFORE, BE IT RESOLVED the City Council hereby authorizes the City Manager to sign the lease with Ehrlich Farms LLC.

DATED AND EFFECTIVE THIS 24th DAY OF October 2012.

ATTEST:



Mayor

City Clerk

WSW COR. ROBERT
FENTLAND D.L.C. No. 68

BASIS OF BEARINGS - PER C.S. 21645

INITIAL POINT

SEE DE

30.00'
30.00'
10' R-O-W

SOUTH ALBANY
COMMUNITY PARK
PARCEL 2

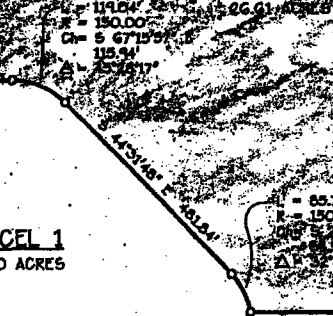
NORTH LINE BY SURVEY DISCOVERY
AGREEMENT E.P.S. VOL. 708 P. 286

POWER EASEMENT
PER B.C. 314, P.C. 329
LOCATION APPROXIMATE

POWER EASEMENT
PER B.C. 324, P.C. 321
LOCATION APPROXIMATE

PARCEL 1
20.00 ACRES

SW CORNER 104
SET AT R-O-W/R-O-W
INTERSECTION. SEE BOUNDARY
DETERMINATION ON SHEET 2.



104-105 N 00°19'57\"/>

105-106 S 00°21'04\"/>

104-105 N 84°17'50\"/>

SEE DE

ELLINGSON RD. (C.R. 550)

Page 1 of 3

EXHIBIT A