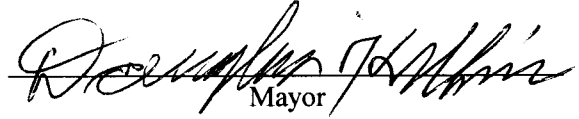




NOW, THEREFORE, BE IT RESOLVED by the City of Albany Council to hereby authorize the conveyance of tax foreclosed properties from Linn County.

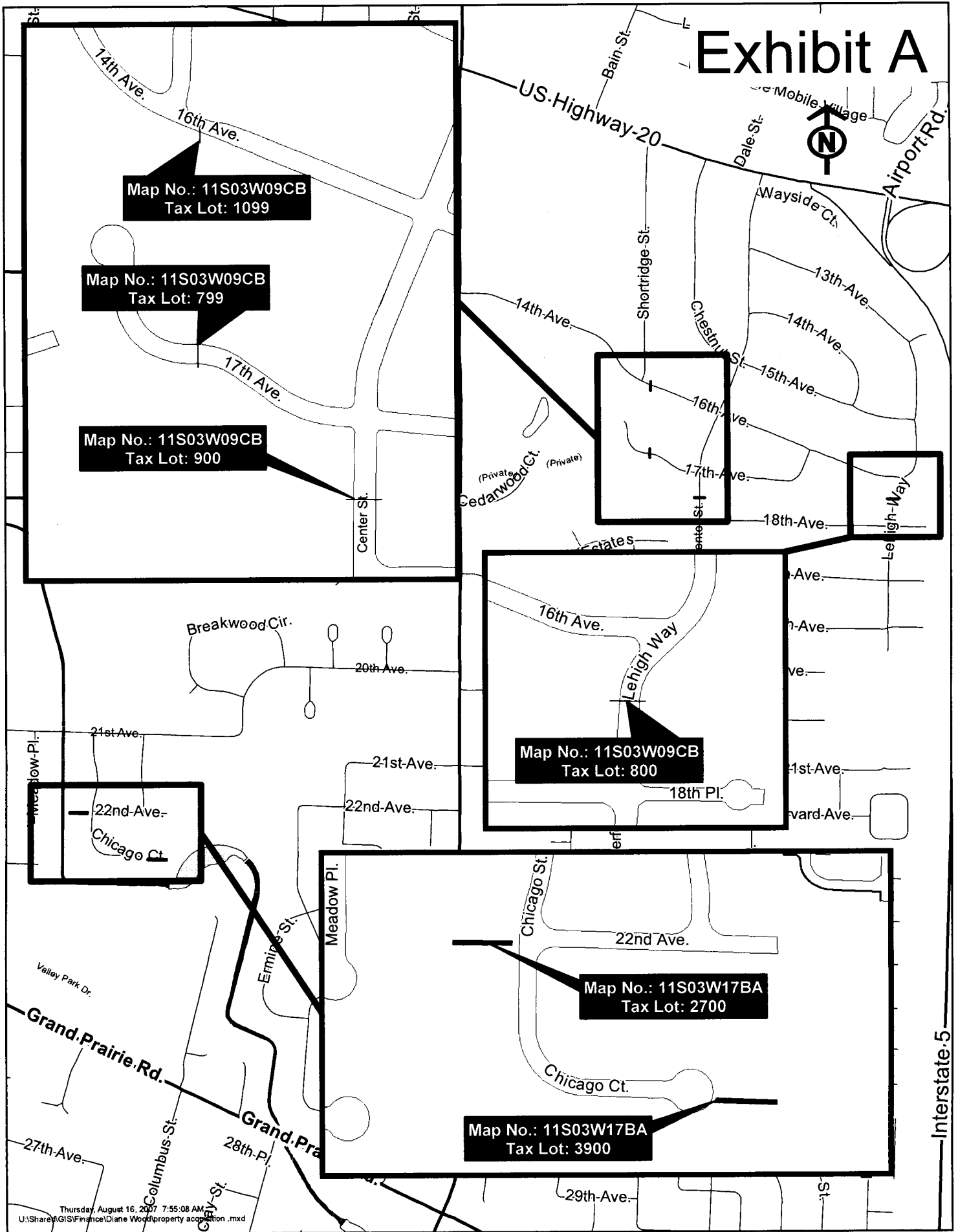
DATED AND EFFECTIVE THIS 22ND DAY OF AUGUST 2007.

  
Mayor

ATTEST:

  
City Clerk

# Exhibit A





TO: Albany City Council

VIA: Wes Hare, City Manager  
Stewart Taylor, Finance Director

FROM: Diane M. Wood, Purchasing Coordinator

DATE: August 15, 2007, for the August 22, 2007, City Council Meeting

SUBJECT: Approval of Tax Foreclosed Property Conveyance from Linn County

RELATES TO STRATEGIC PLAN THEME: • An Effective Government

Action Requested:

Staff requests that Council adopt the attached resolution approving the conveyance of six tax foreclosed properties from Linn County to the City of Albany. The location of the properties are shown as Exhibit "A" on the resolution.

Discussion:

Recently, Linn County contacted the City of Albany of six parcels they had obtained through tax foreclosure and intended to advertise and sell. All of the parcels would be beneficial for the City to acquire for the purposes of street extension or access ways to existing multi-use pathways.

Parcel 11S-03W-17BA, Tax Lot 2700 is a 10-foot wide sidewalk connection between the street system and the Periwinkle multi-use path along Periwinkle Creek. Tax Lot 3900 is a path from Eastgate Subdivision to Periwinkle Creek bike path and the park. These are important pedestrian and bike connections from the neighborhood.

Parcels 11S-03W-09CB, Tax Lots 799, 800, 900, 1099 are all barrier strips, or "spite" strips that are created at the end of a subdivision boundary and typically converted to right-of-way when the streets are extended. At this time, Center Street, Lehigh Way, 16<sup>th</sup> Street, and 17<sup>th</sup> Street have all been extended.

Budget Impact:

Advertising and recording fees total \$241.54 for the six parcels and would be paid by Public Works, 250-50-2700-60101, in the current fiscal year.

Attachments (2)