

RESOLUTION NO. 4937

RESOLUTION AMENDING PARKING RESTRICTIONS WITHIN THAT AREA OF DOWNTOWN ALBANY WHERE PARKING ON PUBLIC STREETS IS ENFORCED AND MANAGED BY THE ALBANY DOWNTOWN ASSOCIATION.

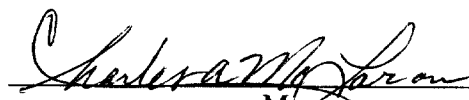
WHEREAS, the Albany Downtown Association has been authorized by the City to provide management and enforcement services for parking in the downtown area of the City of Albany; and

WHEREAS, the Albany Downtown Association has requested certain modifications to parking restrictions in order to provide a more efficient utilization of parking resources.

NOW, THEREFORE, BE IT RESOLVED that the City Council does hereby authorize the following parking restrictions:

1. Designate the two spaces on the west side of Broadalbin just north of 3rd Avenue as "30-Minute" parking.
2. Designate the two spaces on the south side of 4th Avenue just east of Washington Street as "3-Hour Customer Only" parking.
3. Designate the four spaces on the east side of Ellsworth Street just south of 5th Avenue as "30-Minute" parking.
4. Designate the two spaces on the north Side of 3rd Avenue, just west of Ellsworth, as "3-Hour Customer Only" parking and designate two mid-block spaces on the north side of 3rd Avenue between Ellsworth and Broadalbin as "30-Minute" parking.

DATED AND EFFECTIVE THIS 11th DAY OF FEBRUARY 2004.

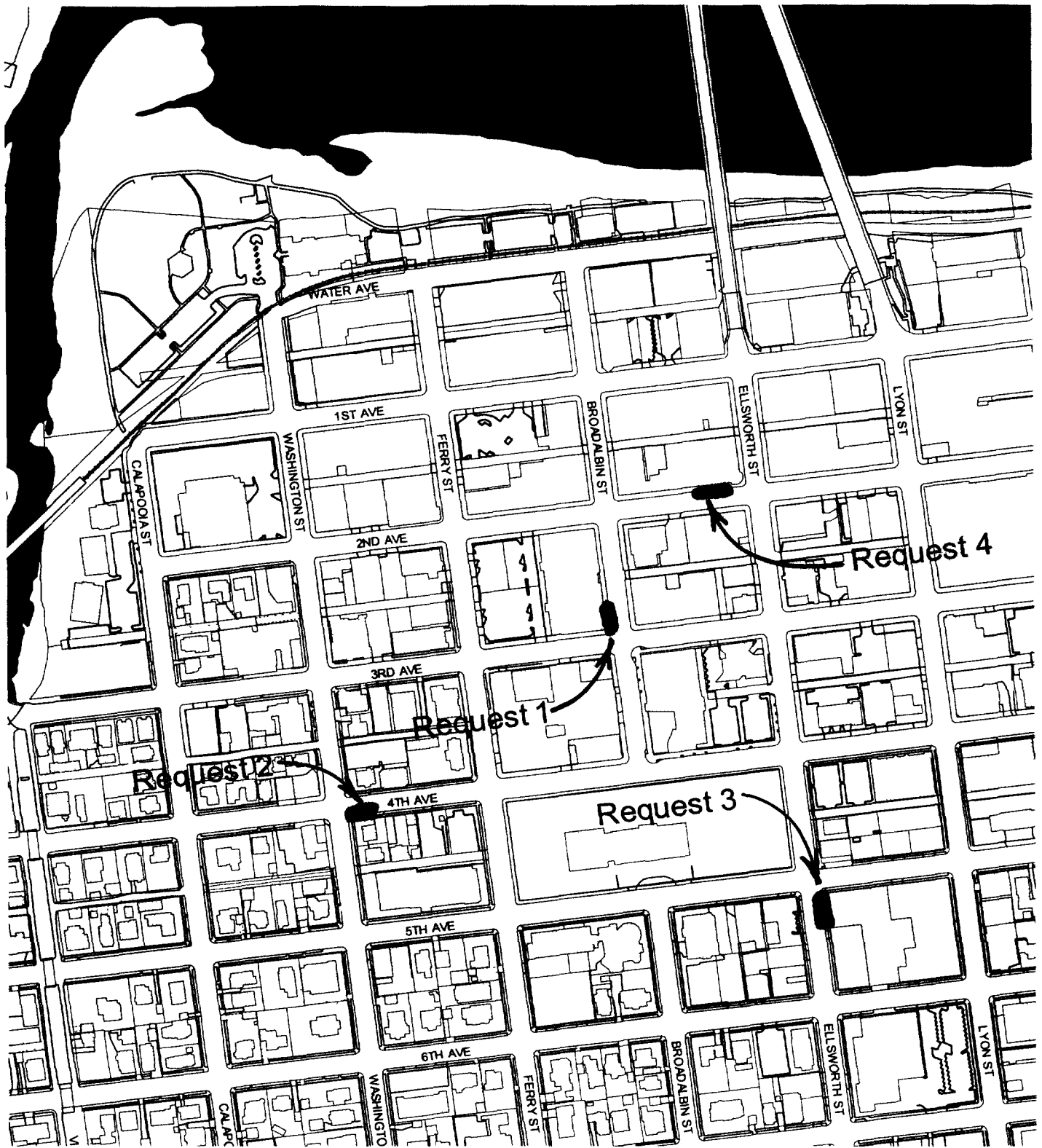


Mayor

ATTEST:



City Clerk



Vicinity Map of Parking Modification Requests



Engineering

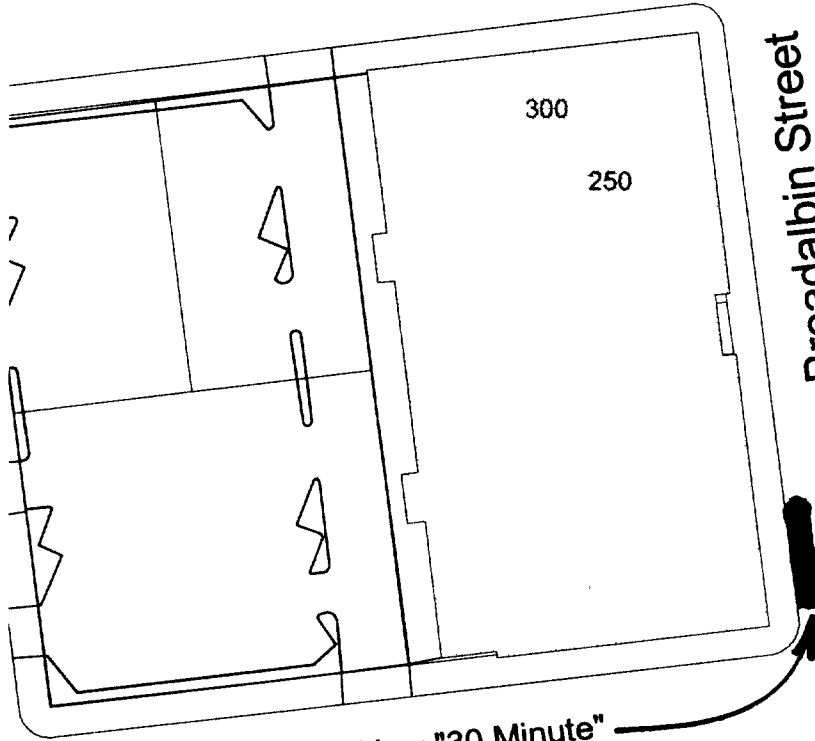
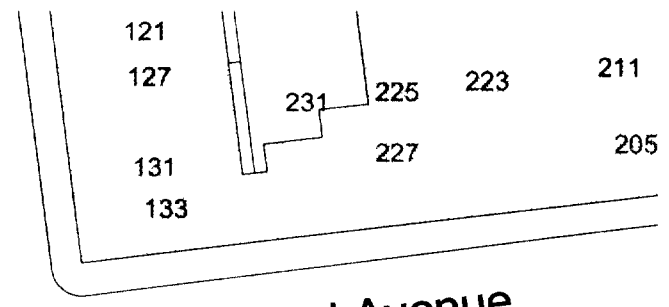
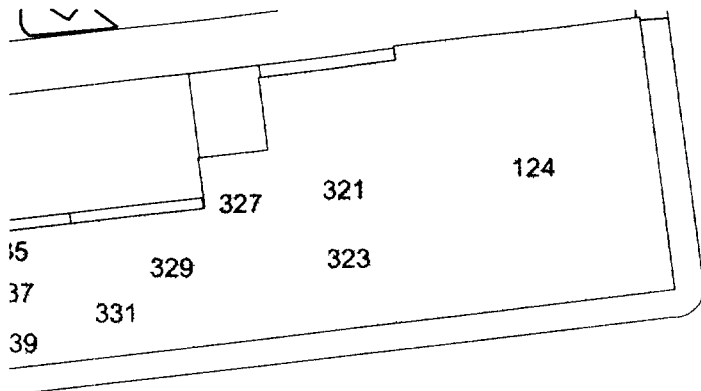
roni nil

Ron Irish

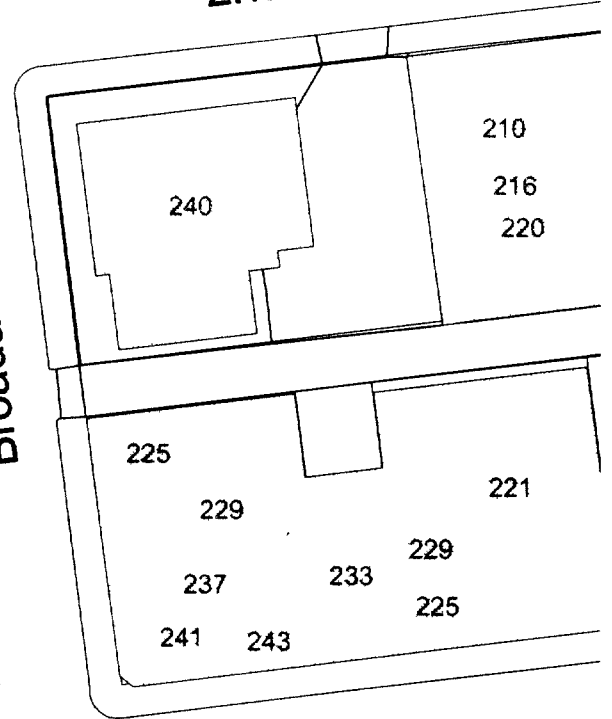
Jan 20, 2004

The City of Albany's infrastructure records, drawings and other documents have been gathered over many decades, using differing standards for quality control, documentation and verification. As the information provided represents current information in a readily available format. While the information provided is generally believed to be accurate, occasionally this information proves to be incorrect, and thus its accuracy is not warranted. Prior to making any property purchase or other investments based in full or in part upon the information provided, it is specifically advised that you independently field verify the information contained within our records.



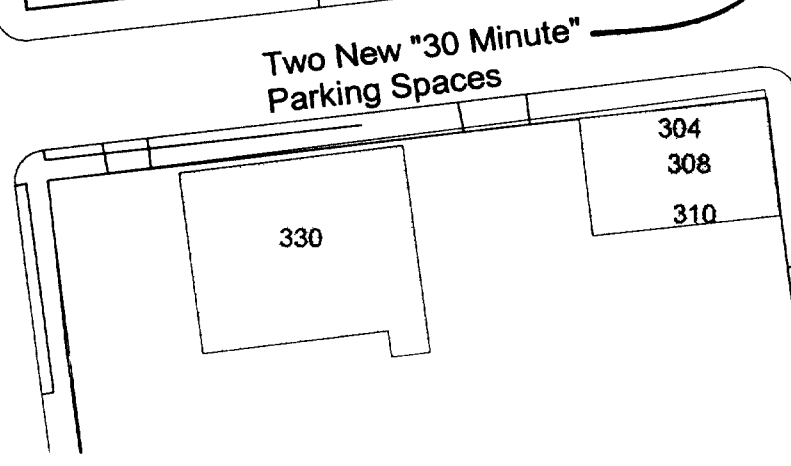


Broadalbin Street



2nd Avenue

3rd Avenue



Request 1 - 290 Broadalbin Street



Engineering

roni nil

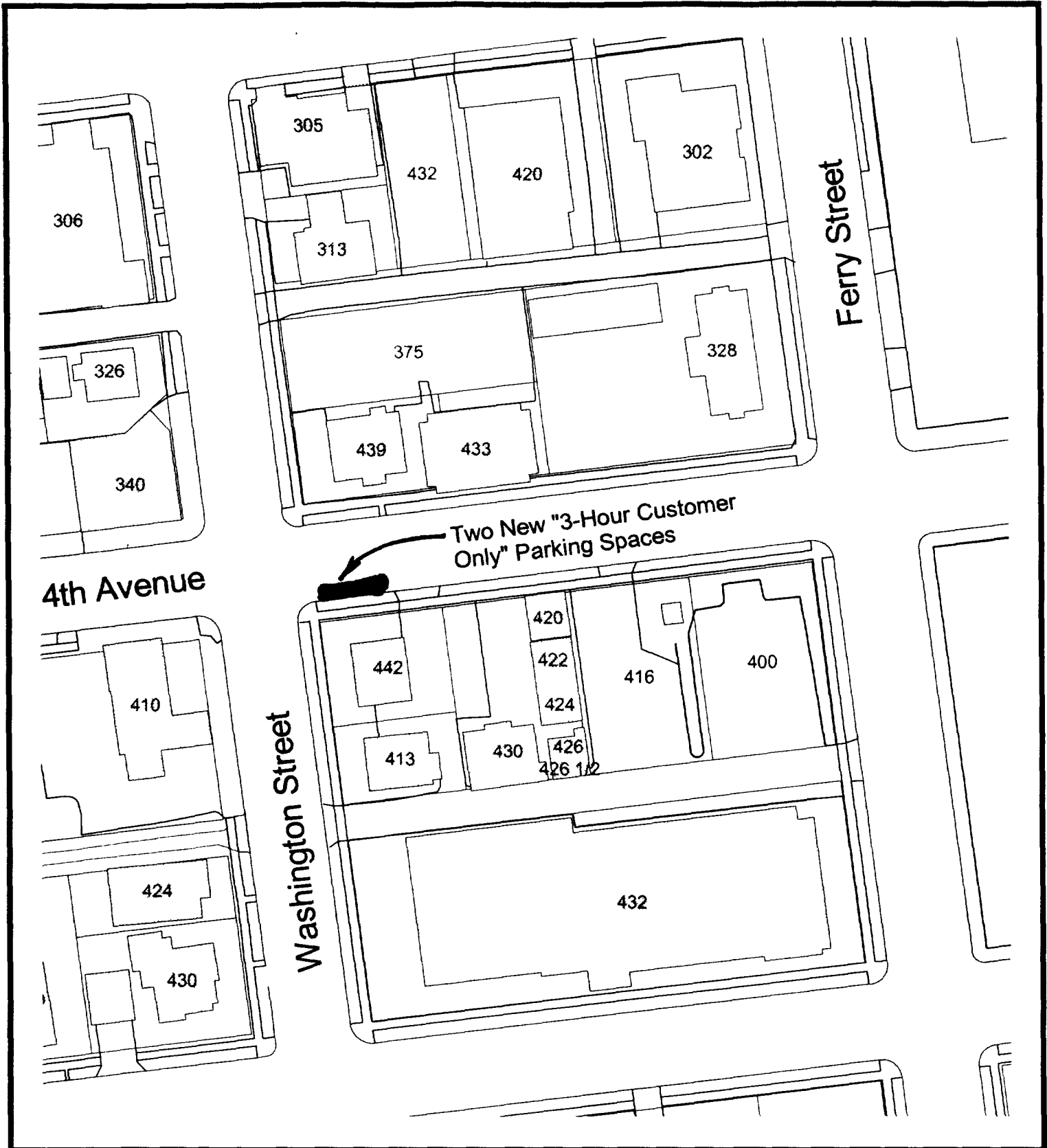
Ron Irish

Jan 20, 2004

0 100 Feet

The City of Albany's Infrastructure records, drawings, and other documents have been gathered over many decades using differing standards for quality control, documentation, and verification. All the information provided represents current information in a readily available format. While the information provided is generally believed to be accurate, occasionally this information proves to be incorrect, and thus its accuracy is not warranted. Prior to making any property purchases or other investments based in full or in part upon the information provided, it is specifically advised that you independently field verify the information contained within our records.





Request 2 - 442 Washington Street



Engineering

roni nil

Ron Irish

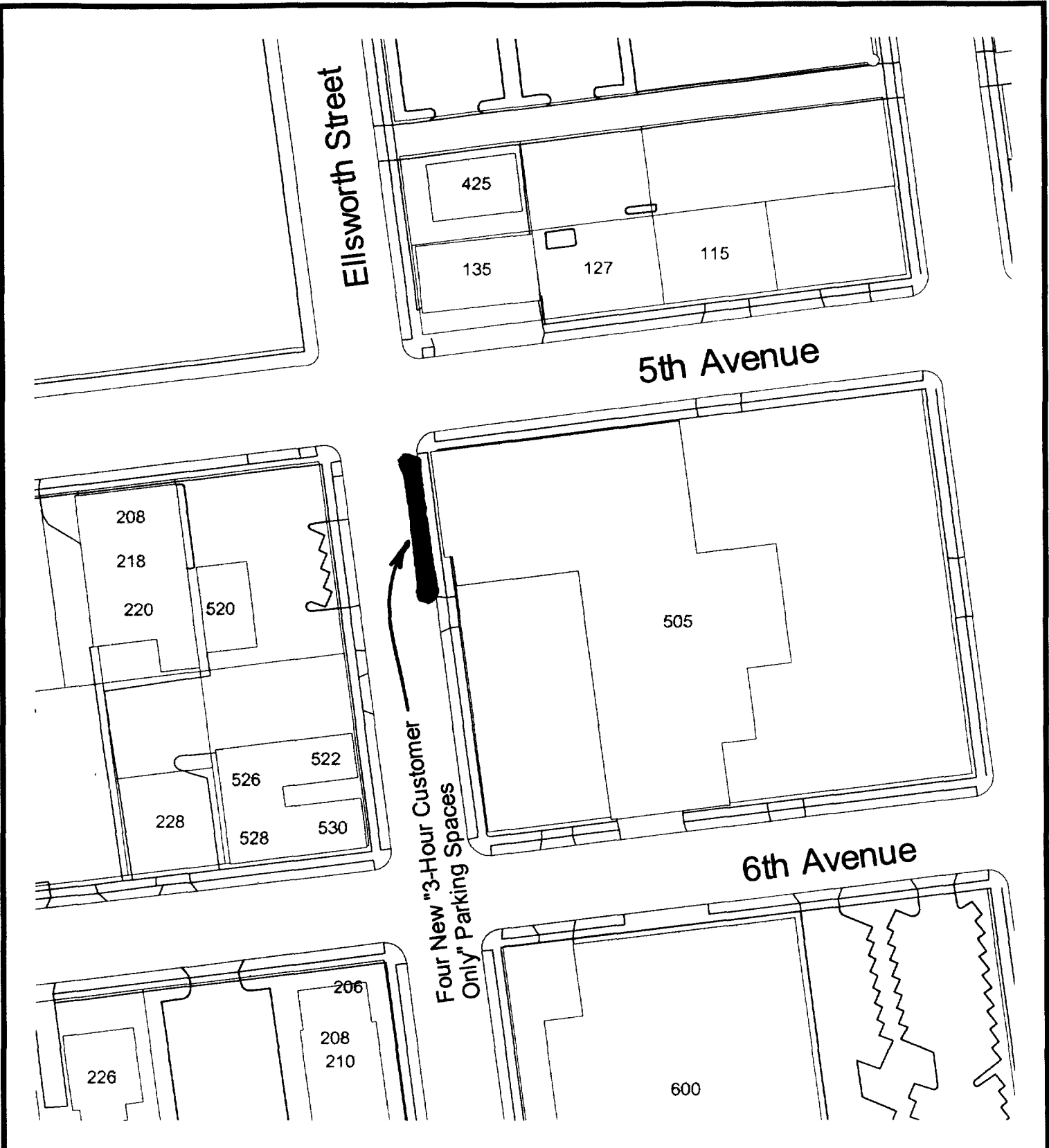
Jan 20, 2004

0 100 Feet



The City of Albany's infrastructure records, drawings, and other documents have been gathered over many decades, using differing standards for quality control, documentation, and verification. All the information provided represents current information in a readily available format. While the information provided is generally believed to be accurate, occasionally this information proves to be incorrect, and thus its accuracy is not warranted. Prior to making any property purchase or other investments based in full or in part upon the information provided, it is specifically advised that you independently field verify the information contained within our records.





Request 3 - 505 Ellsworth Street



0 100 Feet

Engineering

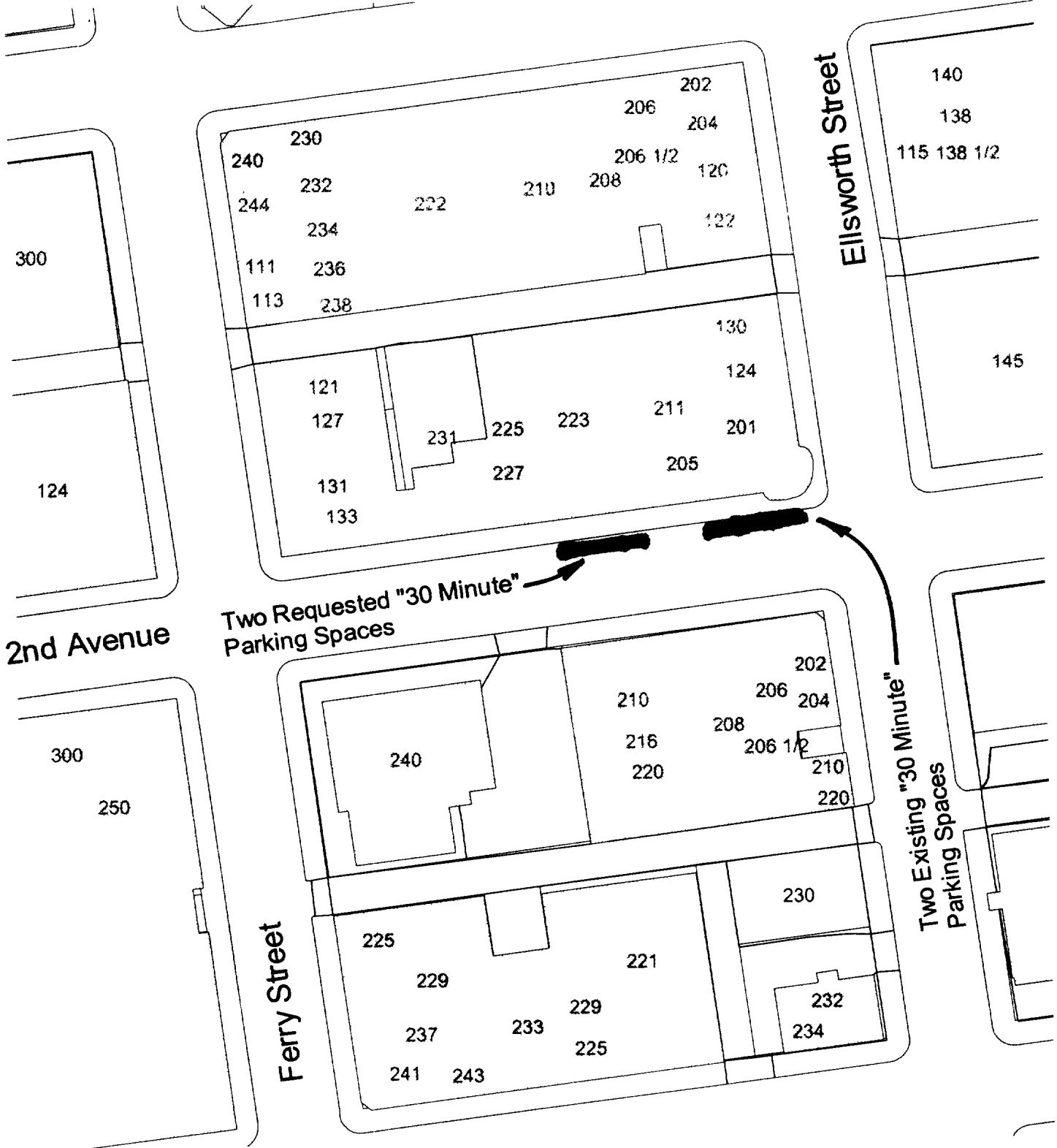
Ron Irish

roni nil

Jan 20, 2004

The City of Albany's Infrastructure records, drawings, and other documents have been gathered over many decades using differing standards for quality control, documentation, and verification. As the information provided represents current information in a readily available format. While the information provided is generally believed to be accurate, occasionally the information proves to be incorrect, and thus its accuracy is not warranted. Prior to making any property purchase or other investments based in full or in part upon the information provided, it is specifically advised that you independently field verify the information contained within our records.





Two Requested "30 Minute"
Parking Spaces

Two Existing "30 Minute"
Parking Spaces

2nd Avenue

Ferry Street

Ellsworth Street

Request 4 - 223 2nd Avenue



Engineering

roni nil

Ron Irish

Jan 20, 2004

0 100 Feet



The City of Albany's infrastructure records, drawings, and other documents have been gathered over many decades using differing standards for quality control, documentation, and verification. All the information provided represents current information to a readily available format. While the information provided is generally believed to be accurate, occasionally this information proves to be incorrect, and thus its accuracy is not warranted. Prior to making any property purchases or other investments based in full or in part upon this information provided, it is specifically advised that you independently field verify the information contained within our records.

