

RESOLUTION NO. 2896

A RESOLUTION FOR THE ADOPTION OF ENGINEERING AND FINANCE REPORTS, AUTHORIZATION TO SECURE EASEMENTS, TO OBTAIN BIDS, TO INCREASE APPROPRIATIONS, AND TO ISSUE WARRANTS FOR THE CONSTRUCTION OF SS-89-1, Highway 20 Sanitary Sewer L.I.D. (East of Commercial Way).

BE IT RESOLVED that the engineering reports of the Public Works Director and the finance reports of the Finance Director filed with the City Recorder on the 27th day of September, 1989, concerning SS-89-1, Highway 20 Sanitary Sewer L.I.D. (East of Commercial Way) be and the same are hereby adopted.

BE IT FURTHER RESOLVED that the Council authorize the Mayor and City Recorder to sign agreements on behalf of the City of Albany for the purpose of obtaining easements to construct the said improvements, direct the City Manager to obtain bids for the construction of said projects as required by law, and authorize the Mayor and City Recorder to make, issue, and negotiate General Obligation Improvement Warrants for the performance of said improvements, bearing interest, and constituting general obligations of the City of Albany. The terms of conditions of such warrants shall be as provided by ORS 287.502 to 287.510.

BE IT FURTHER RESOLVED that funds budgeted within the Improvement Fund be appropriated as follows:

RESOURCE

FROM

TO

Improvement Fund  
26-985-86001


\$137,500.00

REQUIREMENT

Improvement Fund  
26-985-89005

\$137,500.00

DATED this 11th day of October, 1989.

  
\_\_\_\_\_  
Mayor

ATTEST:

  
\_\_\_\_\_  
City Recorder

INTERDEPARTMENTAL MEMORANDUM  
Public Works Department  
Engineering/Utilities Division

TO: Albany City Council

VIA: Steve Bryant, City Manager

FROM: John Joyce, P.E., Public Works Director

DATE: September 20, 1989, for September 27, 1989, City Council Meeting

SUBJECT: Engineer's Report - SS-89-1, Highway 20 Sanitary Sewer Extension

DESCRIPTION OF PROJECT:

This project has been initiated in response to a request from Mid-State Petroleum, Inc., to provide sanitary sewer service to tax lot 1400, Map No. 11-3W-9A. (See attached EXHIBITS A and B). We have on file Petition For Improvement/Waiver of Remonstrance forms from 57% of the parcels which front on the proposed extension. (Those parcels with a petition on file are indicated by cross-hatching on the attached EXHIBIT A.) The request for service and an initial staff study were submitted to the City Council on July 12, 1989, and the Council directed staff to prepare an Engineer's Report and Financial Investigation.

The project consists of approximately 940 linear feet of 12-inch diameter sanitary sewer main line on the north side of Highway 20, which will connect to the existing sanitary sewer system on Commercial Way; 675 linear feet of 8-inch diameter sanitary sewer main line on the south side of Highway 20; and 120 linear feet of 4-inch diameter service laterals constructed to the property lines for individual tax lots. To connect the sewer lines on the north and south sides of Highway 20, an 8-inch pipe (120 linear feet) will be placed in a casing pipe bored under the highway.

For this project, the State has told us that they will not allow open-cut crossings. Because of their restrictions, we are proposing to build parallel systems to serve the north and south sides of Highway 20.

Before making this decision, we compared the cost of installing parallel main line systems to the cost of installing casing pipes for each of the service laterals. Our estimated cost to construct each service lateral using casing pipes installed under the highway ranges from \$12,000 to \$15,000 per lateral. The four service lateral crossings from properties on the south side of the highway to a public main on the north side are anticipated to cost \$48,000 to \$60,000. Alternatively, an 8-inch public main on the south side of the highway, with one bored crossing, is estimated to cost \$45,800. In addition to being less expensive, this alternative has the additional advantage of allowing an easy extension down Timber Street in the future. Based on this analysis, we are proposing to construct parallel systems with limited crossings underneath Highway 20.

SUMMARY OF ESTIMATED COSTS:

This is an estimate of construction costs based on a preliminary sewer system design to serve the project area. Final project costs will vary somewhat from those shown below.

A.	Estimated Construction Costs:	\$108,670.00
B.	10% Construction Contingencies:	<u>10,867.00</u>
C.	Total estimated Construction Costs:	\$119,537.00
D.	15% City Engineering, Legal and Administration:	<u>17,930.00</u>
	Total Costs Assessed to Property Owners:	\$137,500.00


PROPOSED METHOD OF ASSESSMENT:

The attached EXHIBIT C is an assessment matrix comparing the relative property owner costs for five different assessment options. If this project proceeds to completion, staff will recommend that these costs be assessed based on a per-acre basis. We believe that the per-acre method of assessment most fairly distributes the benefits derived from the construction of this project.

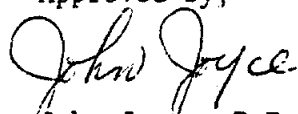
RECOMMENDATION:

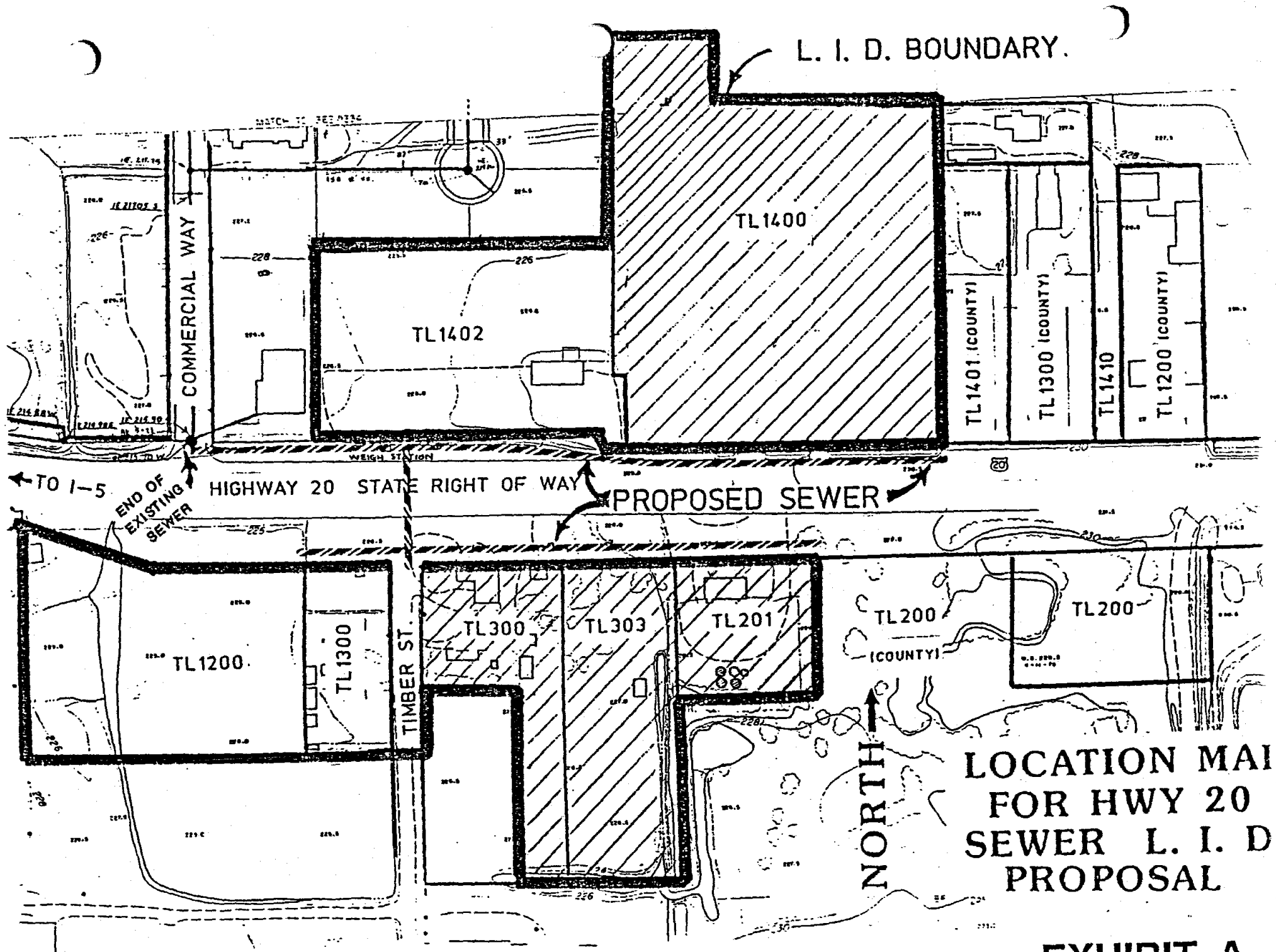
It is recommended that the City Council accept this Engineer's Report and set a public hearing date to hear any objections to or support for this project.

Respectfully submitted,

  
Mark A. Yeager, P.E.  
Engineering/Utilities Manager

Approved by,

  
John Joyce, P.E.  
Public Works Director



**LOCATION MAI  
FOR HWY 20  
SEWER L. I. D  
PROPOSAL**

**EXHIBIT A**

PROPERTY OWNERS LIST FOR PROPOSED LID  
SS-89-1, HWY. 20 SANITARY SEWER (EAST OF COMMERCIAL WAY)

OWNER/ADDRESS:

TAX LOT:

Espey, Charles W. and Eunice  
34250 Hwy 34 SE  
Albany, OR 97321

11-3W-9A, 1402

Don Wilson Enterprises, Inc.  
200 Pacific Blvd. SW  
Albany, OR 97321

11-3W-9A, 1400

Ropp, Samuel M. et al  
34052 Grand Prairie Rd. SE  
Albany, OR 97321

11-3W-9D, 1200

Sanford, Julie A. and Johnson,  
Charles W.  
154 Scrael Hill Rd. NE  
Albany, OR 97321

11-3W-9D, 1300

Rogers, William  
P.O. Box 1147  
Albany, OR 97321

11-3W-9D, 300 and 303

Hagedorn, E.B. and June C.  
P.O. Box 826  
Albany, OR 97321

11-3W-9D, 201

RECOMMENDED  
ASSESSMENT  
OPTION

TAX LOT	RECORD SIZE (ACRES)	FRONT FOOTAGE	OPTION #1 PER ACRE	OPTION #2 PER FRONT FOOT	OPTION #3 PER BENEFIT	OPTION #4 FRONT FOOT PLUS BACKLOT	OPTION #5 BENEFIT PLUS ACREAGE
1402	2.11	392 <sup>50</sup> ±	\$ 23,780 <sup>73</sup>	\$ 31,195 <sup>00</sup>	\$ 19,642 <sup>86</sup>	\$ 24,650 <sup>34</sup>	\$ 22,727 <sup>46</sup>
1400	4.64	391 <sup>95</sup> ±	52,295 <sup>07</sup>	31,152 <sup>19</sup>	19,642 <sup>86</sup>	50,759 <sup>54</sup>	43,983 <sup>61</sup>
1200	1.94	350 <sup>57</sup> ±	21,864 <sup>75</sup>	28,658 <sup>10</sup>	19,642 <sup>86</sup>	21,813 <sup>89</sup>	21,299 <sup>18</sup>
1300	0.56	107 <sup>37</sup>	6,311 <sup>47</sup>	8,533 <sup>77</sup>	19,642 <sup>86</sup>	6,555 <sup>01</sup>	9,704 <sup>92</sup>
300	0.85	153 <sup>75</sup>	9,579 <sup>92</sup>	12,220 <sup>05</sup>	19,642 <sup>86</sup>	9,866 <sup>05</sup>	12,141 <sup>39</sup>
303	1.40	149 <sup>43</sup>	15,778 <sup>69</sup>	11,876 <sup>70</sup>	19,642 <sup>86</sup>	15,526 <sup>38</sup>	16,762 <sup>30</sup>
201	0.70	175 <sup>00</sup>	7,889 <sup>34</sup>	13,909 <sup>00</sup>	19,642 <sup>86</sup>	8,349 <sup>95</sup>	10,881 <sup>15</sup>

TOTALS: 12.20 ACRES 1730<sup>00</sup> FRONTAGE

COST VARIATION PER ACRE: 0 296% 840% 9% 64%

ASSESSMENT MATRIX

ESTIMATED  
PROPERTY AND ASSESSMENT DATA

SS-89-1, Hwy. 20 Sanitary Sewer L.I.D. (East of Commercial Way)

<u>Owner/Address</u>	<u>Description/Tax Lot</u>	<u>Estimated Assessment</u>
Charles & Eunice Espey 34250 Hwy. 34 SE Albany, OR 97321	11-3W-9A, 1402	\$23,780.73
Don Wilson Enterprises, Inc. 200 Pacific Blvd. SW Albany, OR 97321	11-3W-9A, 1400	\$52,295.07
Samuel M. Ropp, et al 34052 Grand Prairie Rd. SE Albany, OR 97321	11-3W-9D, 1200	\$21,864.75
Julie Sanford & Charles Johnson 154 Scrael Hill Rd. NE Albany, OR 97321	11-3W-9D, 1300	\$6,311.47
William Rogers P. O. Box 1147 Albany, OR 97321	11-3W-9D, 300	\$9,579.92
William Rogers P. O. Box 1147 Albany, OR 97321	11-3W-9D, 303	\$15,778.69
E.B. & June Hagedorn P. O. Box 826 Albany, OR 97321	11-3W-9D, 201	\$7,889.34



## MID-STATE PETROLEUM

JOBBER, CHEVRON U. S. A. PRODUCTS

P.O. BOX 1689

ALBANY, OREGON 97321

(503) 926-1817

Out of Toll Free Area: 1-800-452-4129

RECEIVED  
OCT 5 1989  
CITY OF ALBANY

October 4, 1989

Steve Bryant, City Manager  
P.O. Box 490  
Albany, Oregon 97321

Dear Steve,

In case I am unable to attend the meeting regarding the SS-89-1 Hwy 20 sewer L.I.D. meeting, I wish to go on record as being in favor of this project.

I am somewhat opposed to the option #1 method of assessment. If I would be able to serve my entire development from this line, then Option #1 would be acceptable. However, I will no doubt have to connect to Commercial Way line and even bring in a new line to hook up the lots I am soon to develop, and we are now in the process of submitting a subdivision plan.

Since this sewer will only serve those lots that front on Santiam, the assessment should be per front foot. This is much more equitable for all those using the system, whereas Option 1 puts 38% of the load on us.

If I am unable to make the meeting, please convey my feelings in my behalf.

Sincerely,

A handwritten signature in black ink that reads "Don Wilson". The signature is fluid and cursive, with a long horizontal stroke at the end.

Don Wilson



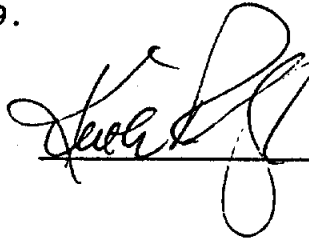
RESOLUTION NO. 2891

WHEREAS, the engineer's report and financial investigation report have been prepared for SS-89-1, Highway 20 Sanitary Sewer L.I.D. (east of Commercial Way) as directed by the Albany City Council by Resolution No. 2882; and

WHEREAS, the engineer's report and financial investigation report have been received by and meet with the Albany City Council's approval.

NOW, THEREFORE, BE IT RESOLVED that the Albany City Council hereby directs that a public hearing be scheduled for October 11, 1989, at 7:15 p.m. to consider the proposed project SS-89-1, Highway 20 Sanitary Sewer L.I.D. (east of Commercial Way) and that notices of the public hearing be in compliance with AMC Section 15.04.060.

Dated this 27th day of September, 1989.



\_\_\_\_\_  
Mayor

ATTEST:



\_\_\_\_\_  
City Recorder