

RESOLUTION NO. 2144

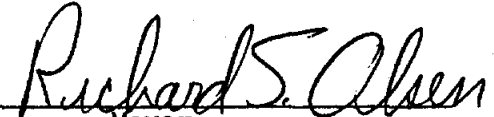
A RESOLUTION ADJUSTING THE BOUNDARY LINE ADOPTED IN RESOLUTION NO. 2120
(MONTEITH HISTORIC DISTRICT).

WHEREAS, the Historic Advisory & Museum Commission after reviewing the western boundary of the Monteith Historic District found that boundary was delineated in an unacceptable manner, and

WHEREAS, the Commission has voted unanimously to recommend the adjustment of the boundary line to the Mayor and Council members,

NOW THEREFORE BE IT RESOLVED by the City Council of the City of Albany, Oregon that the Council members approve the adjustment of the western boundary of the Monteith Historic District as described by the map which is attached hereto as "Exhibit A" and by this reference incorporated herein.

Approved by City Council by the City of Albany, Oregon this 12th day of December, 1979.

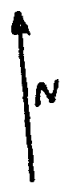

Mayor

Attest:

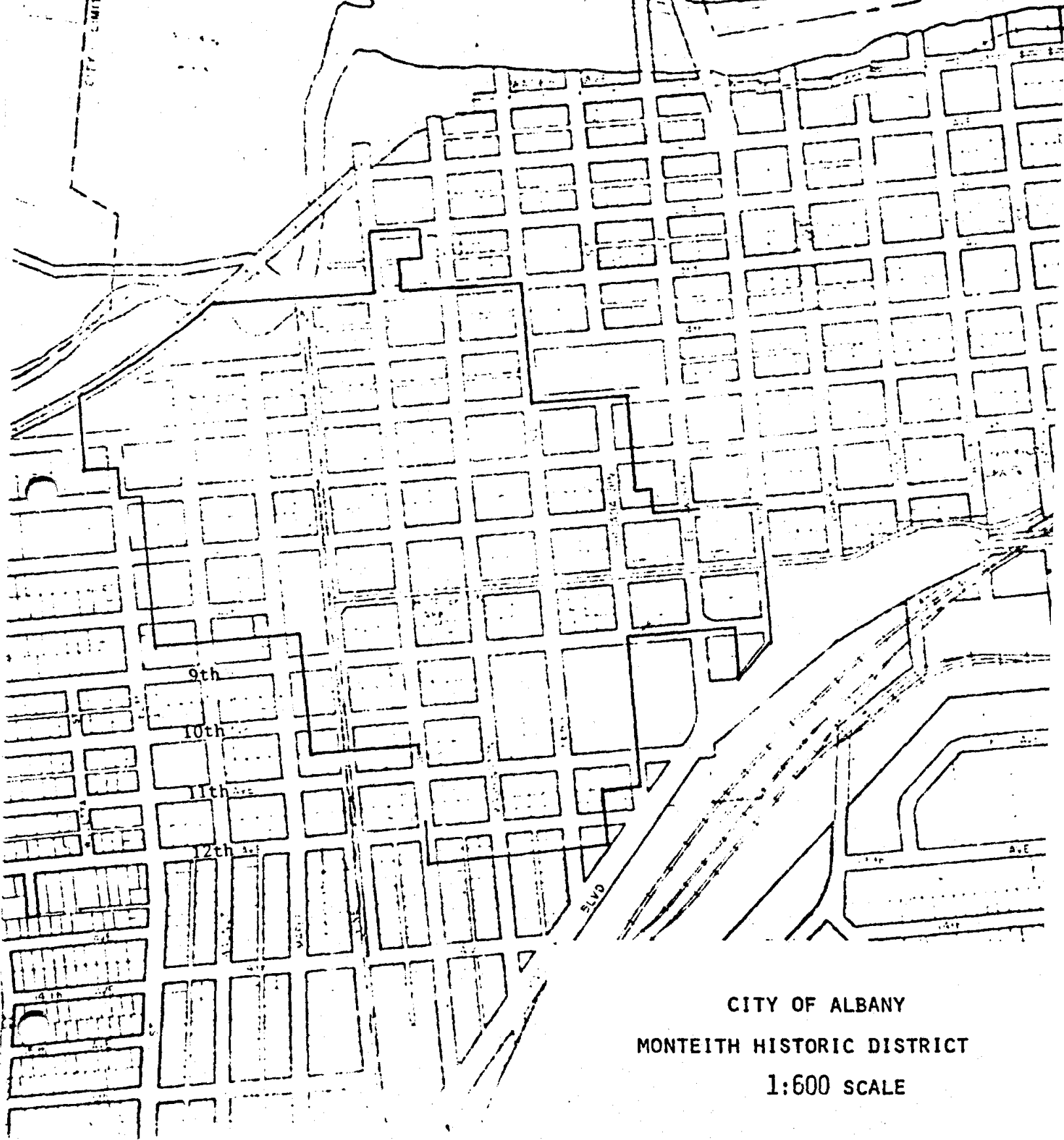

City Recorder

RIVER

EXHIBIT "A"



CITY LIMITS



CITY OF ALBANY

MONTEITH HISTORIC DISTRICT

1:600 SCALE