

ORDINANCE NO. 5477

AN ORDINANCE TO LEVY AN ASSESSMENT AGAINST PROPERTY SPECIFICALLY BENEFITED BY A WATER CONNECTION AND THE ASSESSMENT OF A WATER SYSTEM DEVELOPMENT CHARGE AT: 1555/1565/1575/1585/1595 WAVERLY DRIVE SE, ALBANY; AND DECLARING AN EMERGENCY.

THE PEOPLE OF THE CITY OF ALBANY DO ORDAIN AS FOLLOWS:

Section 1: The Water System Development Charge as referred to in this ordinance is to provide a water connection to serve the second phase of construction of Waverly Apartments. The Water System Development Charge is an arrearage in the amount of \$48,960 and assigned on Water Permit No. W-0126-01. This charge will be assessed on the property described as follows:

(See attached assessment sheets)

Section 2: The Water System Development Charge and the assessment for the same will be levied according to the provisions of Albany Municipal Code, Chapter 15.16.

Section 3: The total cost of the Water System Development Charge is as follows:

(See attached assessment sheets)

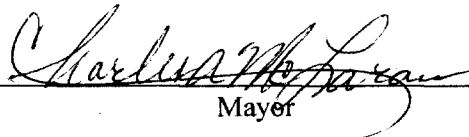
Section 4: The City Recorder is hereby directed to enter a statement of the assessments as above provided in the docket of the city liens and give notice thereof as provided by law.

Section 5: Inasmuch as this ordinance is necessary for the immediate preservation of the peace, health and safety of the City of Albany, Oregon, an emergency is hereby declared to exist; and this ordinance will be in full force and effect immediately upon passage by the Council and approval by the Mayor.

Passed by Council: April 11, 2001

Approved by Mayor: April 11, 2001

Effective Date: April 11, 2001

  
Mayer

ATTEST:

  
City Recorder

WATER SYSTEM DEVELOPMENT CHARGE  
04/02/01 15:34:23

Name/Address	Description	
WAVERLY APARTMENTS LLC	ACREAGE	11-03W-08D -00400
245 COMMERCIAL ST SE		1555/1565/1575/1585WAVLY
ATTN:SIGNA HILTON/STE200	04/11/01 0106290	09570
SALEM, OR 97301	WSDC041101*	48,960.00

Report total... 48,960.00

S. R.03W. W.M.  
, OREGON

11 3W 8D  
ALBANY

10'

81'22" E 1284.84' FROM INTERSECTION OF W. LINE  
DLC 48 & CL OF SANTIAM HWY

Desc: 11-3W-08D-400

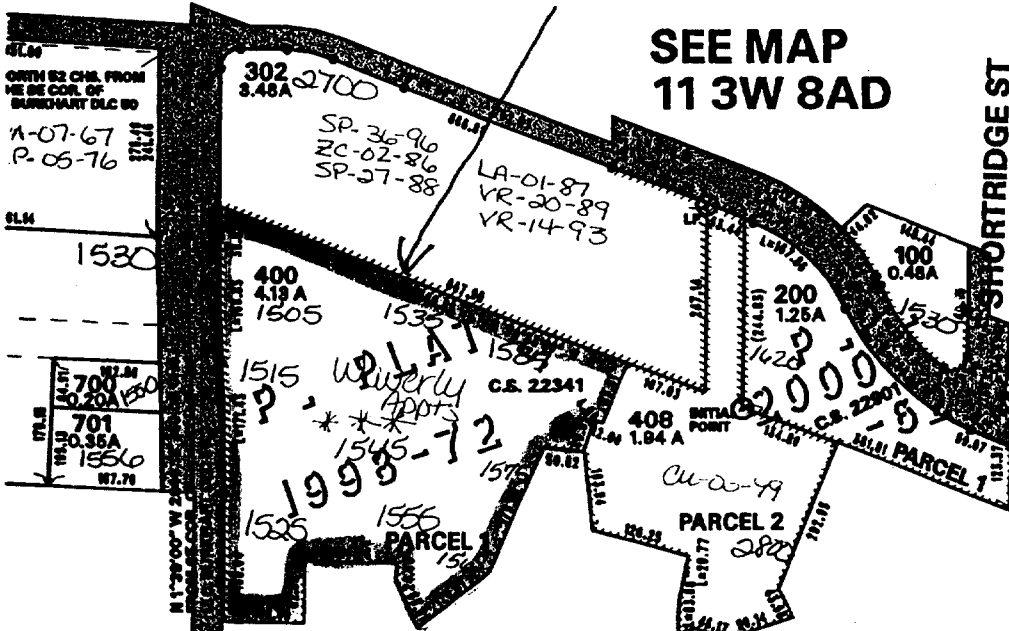
SEE MAP  
11 3W 8AD

\*\*\*TL408

PD-05-78  
SP-66-96  
SP-68-97  
PD-01-98  
CP-06-97  
ZC-08-97  
PA-09-98  
SP-24-98

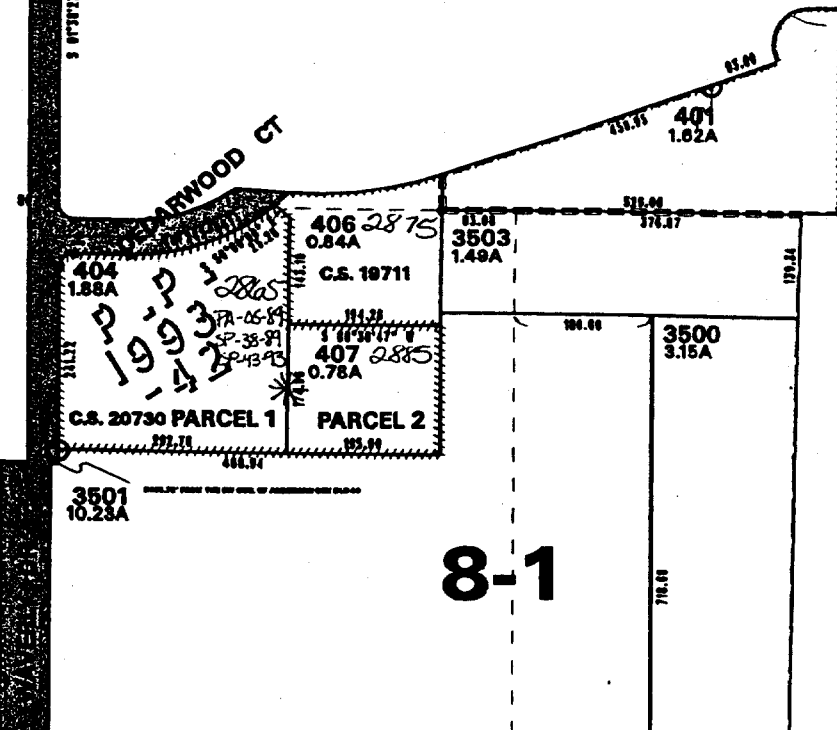
TL 100,200

LA-13-00  
PA-09-00  
PA-12-80



SEE MAP 11 3W 8DA

8-27



8-1

SEE MAP 11 3W 9CC

TL 404/407

ZC-04-88  
PA-09-93  
PA-05-89  
SP-19-99

2600 1916  
0.57A